

ASU

**ALABAMA STATE
UNIVERSITY**

Office of Institutional Research



Your official reference guide to ASU

The 2013 Fact Book

Preface

The Office of Institutional Research (OIR) at Alabama State University publishes the University Fact Book annually during the spring semester. This document serves as an official reference guide to pertinent information about the University's history, facilities, students, personnel, alumni and academic programs. The Fact Book presents information that highlights the patterns or trends that exist in the institutional data. The Fact Book also provides a historical context in which to review the University's development and may be used as a reference among the University's administrators and faculty in planning and decision-making.



Table of Contents

Fall 2012 Quick Facts	2	List of Figures	
General Information		Figure 1	
Mission Statement	3	Alabama State University Organizational Chart	8
Institutional Goals	3	Figure 2	
Accreditations and Memberships	4	Total Enrollment by Colleges, Fall 2013	15
Affiliations	5	Figure 3	
Administration and Organization		Total Fall Enrollment FTE and 12-Month Unduplicated Head Count, 2008-13	33
Board of Trustees	6	Figure 4	
Executive Officers	7	Number of First-Time, First-Year (Freshmen) Applicants, Admitted and Enrolled, Fall 2009-Fall 2013	42
Organizational Chart	8	Figure 5	
ASU Presidents	9	Number of Transfer Student Applicants, Admitted and Enrolled, Fall 2009-13	43
Deans and Directors (Academic Affairs)	10	Figure 6	
Academic Degree Program Inventory	11	Number of Graduate Applicants, Admitted and Enrolled, Fall 2009-13	44
Student Information		Figure 7	
Enrollment	15	Degrees Conferred by Colleges and Level, 2012-13 (Summer, Fall, Spring)	45
New Students	37	Figure 8	
Admission	42	Degrees Conferred by Level, 2008-09 through 2012-13 (Summer, Fall, Spring)	46
Graduation Information		Figure 9	
Degrees Conferred	45	Four-Year, Six-Year and Eight-Year Graduation Rates for First-Time, Full-Time Undergraduates, Entering Cohorts 2002-09	52
Retention and Graduation Rates	52	Figure 10	
Employee Information	54	First-Year, Second-Year and Fourth-Year Retention Rates for First-Time, Full-Time Undergraduates, Entering Cohorts 2005-12	53
Physical Facilities		Figure 11	
Building Inventory, Fall 2013	59	Highest Degrees Earned by Full-Time Faculty, Oct. 31, 2013	58
Space Data, Fall 2008-2013	63		
Financial Information			
Source of Revenue, Fiscal Year 2012-13	64		
Expenditures by Function, Fiscal Year 2012-13	64		
Alabama State University Tuition and Fees as Compared to State Median, 2008-13	65		
Glossary	66		
Alumni Information	71		



Quick Facts

Fall 2012 Enrollment: 6,075

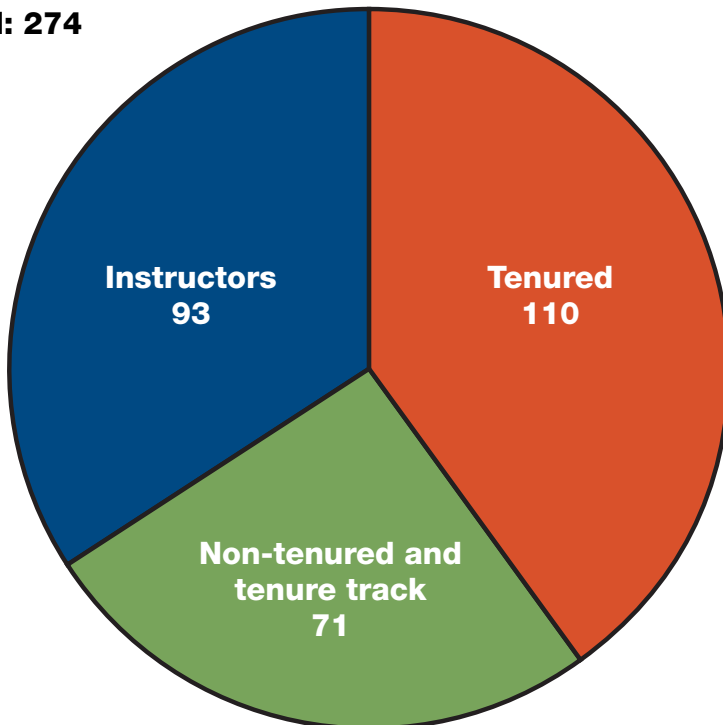
University Operating Budget: \$192,267,571

Degrees Awarded 2012-13

Degree type	Female	Male	Total
Bachelors	418	181	599
Masters	115	32	147
Doctoral	28	20	48
Specialist	22	5	27

Instructional Faculty (Full-Time) 2013

Total: 274



Demographics

Full-time	5,182
Part-time	893
<hr/>	
Male	2,399
Female	3,676
<hr/>	
Instate	4,331
Out-of-State	1,774
<hr/>	
Black	5,530
White (Non-Hispanic)	206
Hispanic	71
Asian	14
American Indian or Alaska Native	9
Native Hawaiian or Other Pacific Islander	4
Non-resident Alien	120
Two or More	38
Unknown	83
<hr/>	
Undergraduate	5356
Freshmen	2,778
Sophomores	1,055
Juniors	708
Seniors	593
Graduate	719
Masters	456
Educational Specialist	66
Doctoral	179
Unclassified	18

General Information

Mission

Alabama State University is a student-centered, nurturing, comprehensive and diverse public historically black University committed to achieving excellence in teaching, research and public service. The University fulfills its mission through fostering critical thought, artistic creativity, professional competence and responsible citizenship in its students; by adding to the body of knowledge to enhance the quality of life through research and discovery; and by helping to advance the state and nation through thoughtful public service. Offering baccalaureate through doctorate degrees, the University maintains a scholarly and creative faculty, state-of-the-art facilities and a living atmosphere in which all members of the campus community can work and learn in pleasant and rewarding surroundings. Consistent with its assurance that race, gender nor economic status inhibits intelligence, creativity or achievement, ASU offers a bridge to success for those who commit to pursuing the building blocks of development, focus, persistence and reward.

Institutional Goals

1. To organize the University in such a manner as to provide sufficient and appropriate leadership, management and oversight to achieve its mission and goals;
2. To ensure the academic integrity of the University;
3. To ensure the fiscal integrity of the University;
4. To enhance the public's perception of the University in order to increase external support;
5. To develop and maintain the physical campus so that the University is a productive, pleasant place to work, study and live;
6. To ensure that the University responds to all of its constituents;
7. To improve programs and services that will contribute to the development of wholesome student life; and
8. To foster continuous improvement of daily operations to become a world-class institution of higher learning.

Accreditations and Memberships

Alabama State University (ASU) is accredited by the Southern Association of Colleges and Schools Commission on Colleges (SACS COC) to award bachelor's, master's, education specialist and doctoral degrees.

University Departmental Programs are accredited by the following organizations and associations:

- » Accreditation Council for Occupational Therapy Education (ACOTE)
- » Commission on Accreditation for Health Informatics and Information Management Education (CAHIIM)
- » Commission on Accreditation in Physical Therapy Education (CAPTE)
- » Commission on Undergraduate Standards and Accreditation (CUSA)
- » Council for Accreditation of Counseling & Related Educational Programs (CACREP)
- » Council on Rehabilitation Education (CORE)
- » Council on Social Work Education (CSWE)
- » National Association of Schools of Art and Design (NASAD)
- » National Association of Schools of Music (NASM)
- » National Association of Schools of Theatre (NAST)
- » National Commission on Orthotic and Prosthetic Education (NCOPE)
- » National Council for Accreditation of Teacher Education (NCATE)
- » The Accreditation Council for Business Schools and Programs (ACBSP)

ASU is approved by the Alabama State Department of Education and its programs and credits are accepted for teacher certification.

In addition, ASU is approved by the Veterans Administration to provide educational programs authorized by Congress under several federal acts and those authorized by the state of Alabama under the Alabama G.I. and Dependents Benefit Act.

Affiliations

ASU holds membership in a large number of organizations, including the following:

- » Alabama Association for Higher Education in Business
- » Alabama Association of College Administrators
- » American Assembly of Collegiate Schools of Business
- » American Association of Collegiate Registrars and Admissions Officers
- » American Association of Colleges for Teacher Education
- » American Association of State Colleges and Universities
- » American Association of University Women
- » American Council on Education
- » American Library Association
- » Association of Governing Boards of Universities and Colleges
- » College Language Association
- » Conference of Southern Graduate Schools
- » Council for Advancement and Support of Education
- » Council of Graduate Schools
- » National Association for Equal Opportunity in Higher Education
- » National Association of Intercollegiate Athletics
- » National Association of Student Personnel Administrators
- » National Broadcasters Association
- » National Collegiate Athletic Association
- » Southwestern Athletic Conference

ASU is on the approved list of the American Association of University Women. Women graduates with approved baccalaureate degrees are eligible for membership in that association.

Alabama State University is authorized under federal law to enroll non-immigrant alien students-ACT 101 (a) (15) (F): CFR 214.3.

Authorization location of more than 20 chapters of national honor and professional societies on the campus further attest to the high standing of the University and recognition of the quality of its academic programs and offerings.

Administration and Organization

Board of Trustees 2012-13

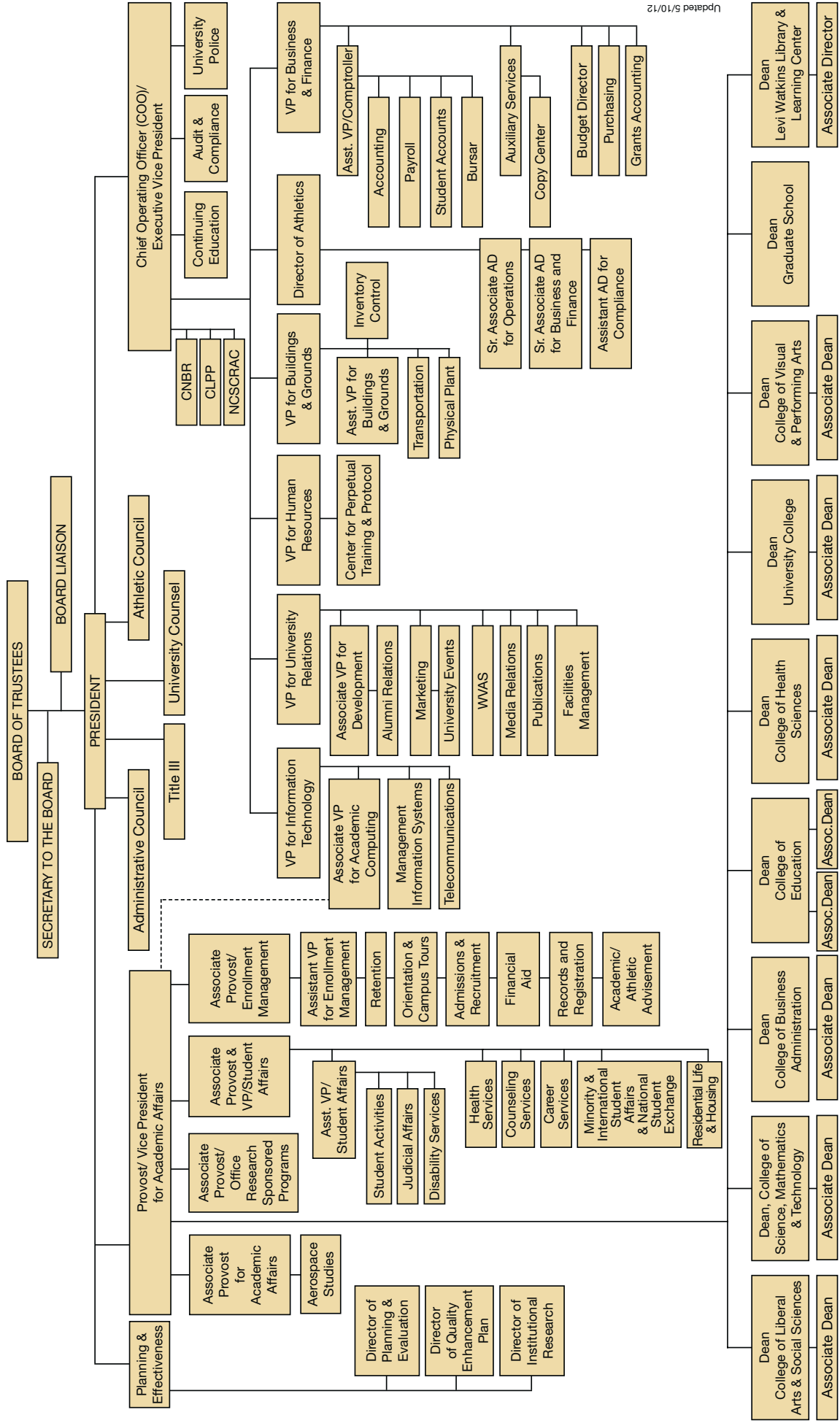
Officers	District	Term Expires January 31
Governor Robert Bentley		2014
Elton N. Dean, Sr.,** Montgomery	State-at-Large	2023
Marvin Wiggins,** Greensboro	Seventh	2017
William H., Harris, Montgomery	Secretary	
Members	District	Term Expires January 31**
Locy Baker, Abbeville	Second	2023
Jacqueline R. Austin Brooks, Tuskegee	Third	2014
Buford Crutcher, Huntsville	Fifth	2020
Thomas H. Figures,** Mobile	State-at-Large	2014
Robert E. Gilpin, Montgomery	Second	2020
Alfreda Green, Huntsville	State-at-Large	2020
Taylor Hodge, Jr., Mobile	First	2017
Bobby M. Junkins, Gadsden	Fourth	2023
Larry Thornton	State-at-Large	2014
Herbert Young,** Hoover	Sixth	2017

**Denotes Trustees who are alumni of the University.
Trustees may serve until their successors are appointed but not more than 12 years.

Administrative Officers Fall 2013

Dr. William H. Harris	Interim President
Dr. John F. Knight Jr.	Executive Vice President and Chief Operating Officer
Dr. Bernadette Chapple	Associate Executive Vice President
Dr. Leon C. Wilson	Interim Provost and Vice President for Academic Affairs
Dr. Sharron Herron-Williams	Interim Associate Provost for Academic Affairs
Carmen Douglas	Vice President for Human Resources
Freddie Gallot Jr.	Vice President for Business and Finance
Melvin Hines	Acting Director of Intercollegiate Athletics
Danielle M. Kennedy	Vice President for University Relations
Brian E. Thornton	Interim Vice President for Buildings and Grounds
Dr. William P. Hytche	Associate Provost and Vice President for Student Affairs
Cherise Peters	Associate Provost and Vice President for Enrollment Management

Figure 1. Alabama State University Organizational Chart



Updated 5/10/12

ASU Presidents

George N. Card

1874-1878

William Burns Paterson

1878-1915

John William Beverly

1915-1920

George Washington Trenholm

1920-1925

Harper Council Trenholm

1925-1962

Robert C. Hatch

(Interim President-Jan. 1962-Sept. 1962)

1962-1962

Levi Watkins

1962-1981

Robert Lee Randolph

1981-1983

Leon Howard

1984-1991

(Interim President-Nov. 1983-August 1984)

C. C. Baker

1991-1994

William H. Harris

1994-2000

Roosevelt Steptoe

2000-2001

(Interim President- Oct. 2000-Sept. 2001)

Joe A. Lee

2001-2008

William H. Harris

2008-2012

Joseph H. Silver Sr.

2012-2012

William H. Harris

2013-2014

(Interim President-Jan. 2013-Jan. 2014)



Deans and Directors (Academic Affairs) Fall 2013

Dr. Anthony Troy Adams	Interim Dean, College of Liberal Arts and Social Sciences
Dr. Le-Quita Booth	Dean, College of Business Administration
Dr. Doris Screws	Interim Dean, College of Education
Dr. Steven B. Chesbro	Dean, College of Health Sciences
Dr. Cajetan Akujuobi	Dean, College of Science, Mathematics and Technology
Dr. Tommie H. Stewart	Dean, College of Visual and Performing Arts
Dr. Evelyn A. Hodge	Dean, University College
Dr. William A. Person	Dean, Graduate School
Dr. Janice R. Franklin	Dean, Levi Watkins Learning Center
Dr. Christine C. Thomas	Director, Office of Academic Planning and Evaluation
Dr. Yiyun Jie	Interim Director, Office of Institutional Research
Dr. Tanjula Petty	Director, Quality Enhancement Plan
Dr. Ronald Brown	Assistant Vice President, Academic Advisement and Support Services

Academic Degree Program Inventory

CIP	Field Of Study	Program Title	Degrees Offered
College of Liberal Arts & Social Sciences			
09.0101	Speech Communication and Rhetoric	Communications	B.A.
23.0101	English Language and Literature, General	English	B.A.
43.0104	Criminal Justice/ Safety Studies	Criminal Justice Studies	B.S.
44.0701	Social Work	Social Work	B.S.W.
45.1001	Political Science and Government, General	Political Science and Government	B.A.
54.0101	History, General	History	B.A.
College of Business Administration			
11.0401	Information Science/ Studies	Computer Information Systems	B.S.
52.0201	Business Administration and Management, General	Business Management and Administration	B.S.
52.0301	Accounting	Accounting	B.S.
52.0801	Finance, General	Banking and Finance	B.S.
52.1401	Marketing/Marketing Management, General	Marketing and Purchasing	B.S.
52.0301	Accounting	Accountancy	M.Acc.
College of Education			
13.1001	Special Education and Teaching, General	Special Education (MR)	B.S.
13.1202	Elementary Education and Teaching	Elementary Education	B.S.
13.1205	Secondary Education and Teaching	Secondary Education	B.S.
13.1210	Early Childhood Education and Teaching	Pre-Elementary Education	B.S.
13.1312	Music Teacher Education	Music Education	B.M.Ed.

Academic Degree Program Inventory (continued)

CIP	Field Of Study	Program Title	Degrees Offered
College of Education (continued)			
13.1314	Physical Education Teaching and Coaching	Physical Education	B.S.
31.0301	Parks, Recreation and Leisure Facilities Management, General	Parks and Recreation Management	B.S.
42.0101	Psychology, General	Psychology	B.S.
13.0401	Educational Leadership and Administration, General	Educational Administration	M.Ed.
13.0501	Educational/ Instructional Technology	Library Educational Media	M.Ed.
13.1001	Special Education and Teaching, General	Special Education (MR, LD)	M.Ed.
13.1101	Counselor Education/ School Counseling and Guidance Services	Guidance Counseling	M.Ed.
13.1205	Secondary Education and Teaching	Pre-Elementary/ Elementary Education	M.Ed.
13.1210	Early Childhood Education and Teaching	Pre-Elementary/ Elementary Education	M.Ed.
13.1206	Teacher Education, Multiple Levels	P-12 Education	M.Ed.
11.1099	Computer/Information Technology Services Administration and Management Applied Technology	Applied Technology	M.S.
44.9999	Public Administration and Social Service Professions, Other	Agency Counseling	M.S.
13.0401	Educational Leadership and Administration, General	Educational Leadership, Policy and Law	Ed.D.

Academic Degree Program Inventory (continued)

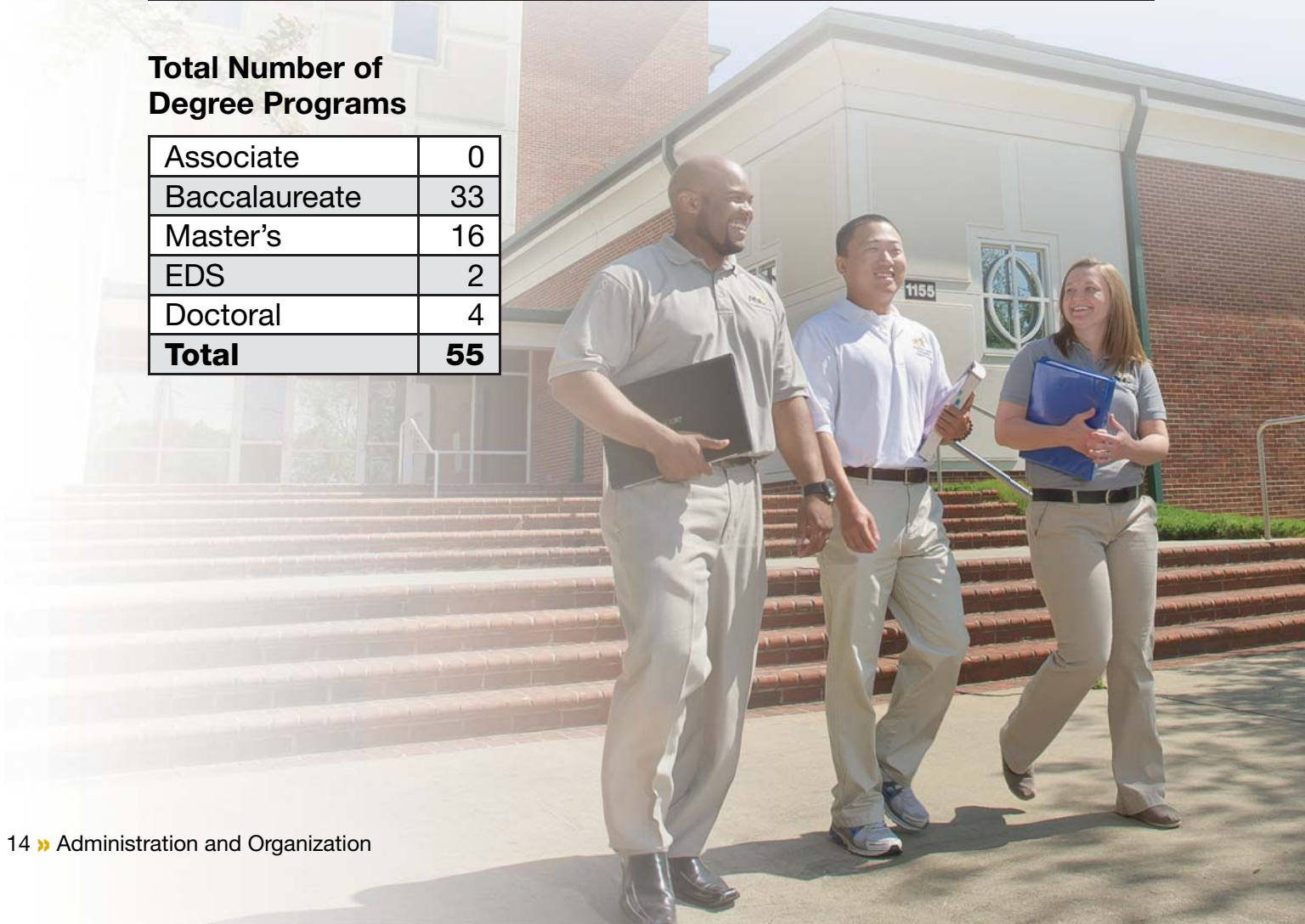
CIP	Field Of Study	Program Title	Degrees Offered
College of Education (continued)			
13.0401	Educational Leadership and Administration, General	Educational Leadership, Policy and Law	Ph.D.
13.0101	Education, General	Education	Ed.S.
13.1101	Counselor Education/ School Counseling and Guidance Services	Counseling	Ed.S.
College of Health Sciences			
51.0706	Health Information/ Medical Records Administration/ Administrator	Health Information Management	B.S.
51.2399	Rehabilitation and Therapeutic Professions, Other	Rehabilitation Services	B.S.
51.2306	Occupational Therapy/Therapist	Occupational Therapy	M.S.O.T
51.2307	Orthotist/Prosthetist	Prosthetics and Orthotics	M.S.P.O.
51.2310	Vocational Rehabilitation	Rehabilitation Counseling	M.R.C.
51.2308	Physical Therapy/ Therapist	Physical Therapy	D.P.T.
College of Science, Mathematics & Technology			
11.0701	Computer Science	Computer Science	B.S.
26.0101	Biology/Biological Sciences, General	Biology	B.S.
26.0101	Biology/Biological Sciences, General	Biology	M.S.
26.0502	Microbiology, General	Microbiology	Ph.D.
26.1302	Marine Biology And Biological Oceanography	Marine Biology	B.S.
27.0101	Mathematics, General	Mathematics	B.S.
27.0101	Mathematics, General	Mathematics	M.S.

Academic Degree Program Inventory (continued)

CIP	Field Of Study	Program Title	Degrees Offered
College of Science, Mathematics & Technology (continued)			
40.0501	Chemistry, General	Chemistry	B.S.
40.0510	Forensic Chemistry	Forensic Chemistry	B.S.
40.0801	Physics, General	Physics	B.S.
43.0106	Forensic Science And Technology	Forensic Science	M.S.
43.0111	Criminalistics and Criminal Science	Forensic Biology	B.S.
College of Visual & Performing Arts			
50.0301	Dance, General	Dance	B.F.A.
50.0501	Drama And Dramatics/Theatre Arts, General	Theatre Arts	B.A.
50.0701	Art/Art Studies, General	Art	B.A.
50.0901	Music, General	Music	B.A.

Total Number of Degree Programs

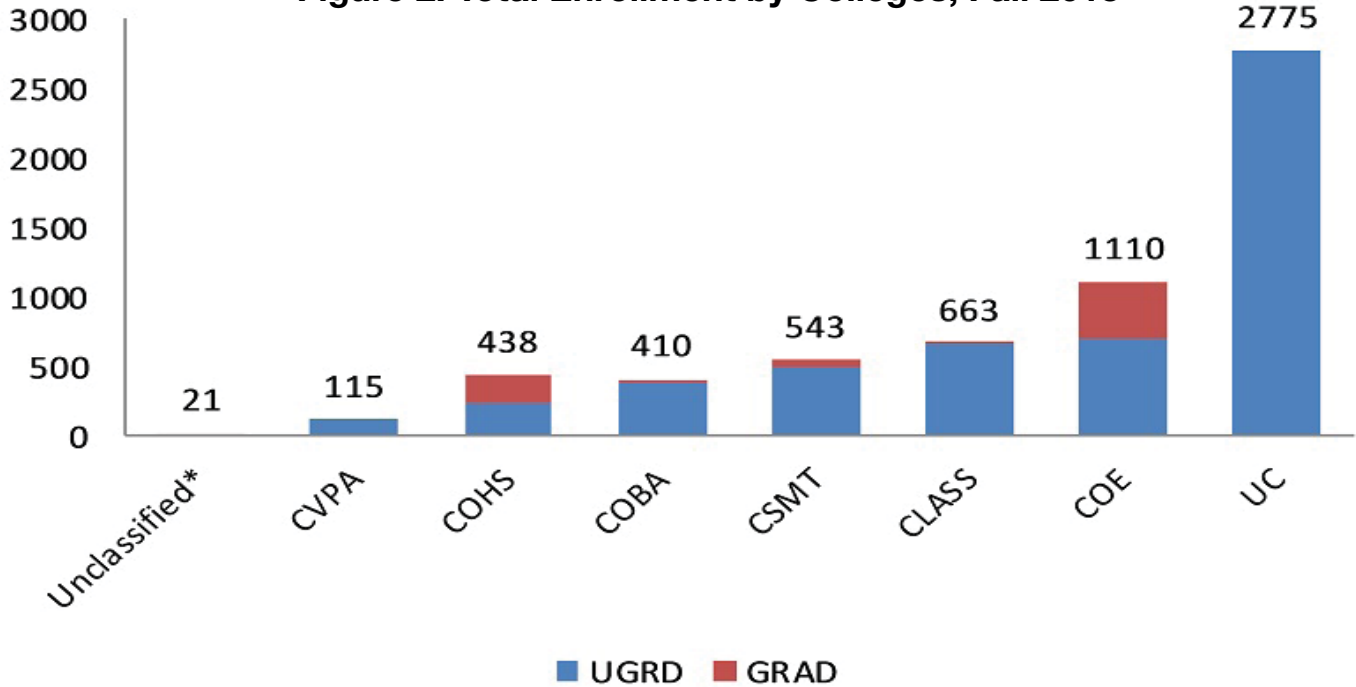
Associate	0
Baccalaureate	33
Master's	16
EDS	2
Doctoral	4
Total	55



Student Information

Enrollment

Figure 2. Total Enrollment by Colleges, Fall 2013



Enrollment by College, Academic Level and Full-Time/Part-Time Status, Fall 2013

Academic College	Undergraduates			Graduates			Total
	Full-Time	Part-Time	Total	Full-Time	Part-Time	Total	
College of Liberal Arts and Social Sciences	595	62	657	2	4	6	663
College of Health Sciences	224	18	242	163	33	196	438
College of Business Administration	324	54	378	22	10	32	410
College of Education	599	91	690	95	325	420	1,110
College of Visual and Performing Arts	104	11	115	0	0	0	115
College of Science, Mathematics and Technology	444	52	496	27	20	47	543
University College	2,581	194	2,775	0	0	0	2,775
Unclassified*	1	2	3	1	17	18	21
Total	4,872	484	5,356	310	409	719	6,075

*Note: Unclassified includes Non-degree seeking students and undecided students at the graduate level.

**Full-Time Equivalent (FTE) by In-State/Out-of-State
Status and Academic Level, Fall 2013**

Full-Time Equivalent	Undergraduates	Graduates	Total
In-state	3,566	473	4,039
Out-of-state	1,611	81	1,692
Total	5,177	554	5,731

Enrollment by Gender, Ethnicity and Academic Level, Fall 2013

Gender & Ethnicity		Undergrad	Grad	Total
Male	American Indian or Alaska Native	2	1	3
	Asian	4	4	8
	Black or African American	1,999	148	2,147
	Native Hawaiian or Other Pacific Islander	1	0	1
	Hispanic/Latino	39	3	42
	Non-resident alien/International	67	4	71
	Other	6	4	10
	Two or more	10	2	12
	White non-Hispanic	34	45	79
	Unknown	26	0	26
Subtotal (Male)		2,188	211	2,399
Female	American Indian or Alaska Native	3	3	6
	Asian	4	2	6
	Black or African American	2,974	409	3,383
	Native Hawaiian or Other Pacific Islander	3	0	3
	Hispanic/Latino	22	7	29
	Non-resident alien/International	44	5	49
	Other	12	2	14
	Two or more	24	2	26
	White non-Hispanic	52	75	127
	Unknown	30	3	33
Subtotal (Female)		3,168	508	3,676
Total (Male & Female)		5,356	719	6,075

Enrollment by College, Gender and Classification, Fall 2013

College		Fresh.	Soph.	Jr.	Sr.	Ma.*	Spec.	Doc.	Uncl.	Grad Total
College of Liberal Arts & Social Sciences	F	110	113	73	92	4	0	0	0	392
	M	67	63	69	70	2	0	0	0	271
	Subtotal	177	176	142	162	6	0	0	0	663
College of Health Sciences	F	62	64	23	38	76	0	57	0	320
	M	16	15	11	13	26	0	37	0	118
	Subtotal	78	79	34	51	102	0	94	0	438
College of Business Administration	F	44	41	43	47	19	0	0	0	194
	M	44	47	40	72	13	0	0	0	216
	Subtotal	88	88	83	119	32	0	0	0	410
College of Education	F	90	117	93	117	208	60	44	0	729
	M	50	81	57	85	79	6	23	0	381
	Subtotal	140	198	150	202	287	66	67	0	1,110
College of Visual and Performing Arts	F	17	15	14	13	0	0	0	0	59
	M	14	15	14	13	0	0	0	0	56
	Subtotal	31	30	28	26	0	0	0	0	115
College of Science, Mathematics & Technology	F	92	113	58	79	17	0	11	0	370
	M	43	40	35	36	12	0	7	0	173
	Subtotal	135	153	93	115	29	0	18	0	543
University College	F	1,203	193	108	94	0	0	0	0	1,598
	M	924	137	70	46	0	0	0	0	1,117
	Subtotal	2,127	330	178	140	0	0	0	0	2,775
Unclassified*	F	2	0	0	0	0	0	0	12	14
	M	0	1	0	0	0	0	0	6	7
	Subtotal	2	1	0	0	0	0	0	18	21
Total Class		2,778	1,055	708	815	456	66	179	18	6,075

*Note: Alt-A students are included in Master's.

Unclassified includes non-degree seeking students at the undergraduate level and undecided students at the graduate level.

Enrollment by College, Major and Classification, Fall 2013

	Freshmen	Sophomores	Juniors	Seniors	Graduates	Total
College of Liberal Arts & Social Sciences						
Communication	54	61	40	59		214
Criminal Justice	75	62	58	53		248
English	3	7	8	9		27
History	4	2	3	4	6	19
Political Science	2	10	12	9		33
Social Work	39	34	21	28		122
Sociology						
Subtotal	177	176	142	162	6	663
College of Health Sciences						
Health Information Management	19	15	7	12	0	53
Occupational Therapy					57	57
Physical Therapy					94	94
Prosthetics & Orthotics					11	11
Rehabilitation Counseling					34	34
Rehabilitation Services	59	64	27	36	0	186
Subtotal	78	79	34	48	196	438
College of Business Administration						
Accounting	18	11	16	26	32	103
Computer Information Systems	22	33	25	36		116
Finance	4	8	5	8		25
Management	28	23	24	36		111
Marketing	16	13	13	13		55
Subtotal	88	88	83	119	32	410
College of Education						
Administration					3	3
Applied Technology					23	23
Biology Education					16	16
Collaborative Education	7	5	4	11	25	52
Clinical & Mental Health Counseling					81	81

Enrollment by College, Major and Classification, Fall 2013 (continued)

	Freshmen	Sophomores	Juniors	Seniors	Graduates	Total
College of Education (continued)						
Early Childhood Education	18	16	13	14	23	84
Elementary Education	20	28	26	27	56	157
English Education					12	12
Health Education	3	1	1	6	1	12
History Education					3	3
Instructional Leadership Program					30	30
Leadership, Policy & Law					67	67
Library Education Media					11	11
Math Education					18	18
Music Education	1	5	6	8	6	26
Physical Education	13	28	30	42	12	125
Psychology	31	35	24	36		126
Reading/Reading Specialist					3	3
Recreation	24	51	23	22		120
School Counseling					17	17
Social Science Education					10	10
Secondary Biology	3	4	1	4		12
Secondary Chemistry					1	1
Secondary English	8	7	10	8		33
Secondary General Science	1	1	1	1		4
Secondary History	4	6	5	2		17
Secondary Mathematics	3	6	2	6		17
Secondary Marketing	4	2	1	10		17
Secondary Social Science Education	0	3	3	4		10
Teacher Leadership Program					3	3
Subtotal	140	198	150	202	420	1,110

Enrollment by College, Major and Classification, Fall 2013 (continued)

	Freshmen	Sophomores	Juniors	Seniors	Graduates	Total
College of Visual & Performing Arts						
Art	4	8	8	7		27
Music	3	5	5	7		20
Theatre	24	17	15	12		68
Subtotal	31	30	28	26		115
College of Science, Mathematics & Technology						
Biology	77	91	57	69	12	324
Chemistry	24	23	16	17		80
Computer Science	12	12	7	10		41
Forensic Science	10	11	2	8	11	42
Mathematics	12	16	11	11	6	56
Microbiology					18	18
Subtotal	135	153	93	115	47	543
University College						
Accounting	52	3	2	3		60
Art	23	7	2	3		35
Biology	185	24	12	6		227
Communication	103	17	17	6		143
Chemistry	29	8	3	3		43
Computer Information Systems	50	9	5	3		67
Criminal Justice	173	30	15	11		229
Computer Science	67	9	3	1		80
Early Childhood Education	42	11	7	3		63
Elementary Education	45	11	9	7		72
Engineering	25	3	3	0		31
English	11	2	1	2		16
Finance	13	3	0	3		19
Forensic Science	42	1	0	0		43
Health Education	41	5	3	2		51
Health Information Management	30	10	2	2		44
History	8	1	2	0		11
Mathematics	13	1	0	2		16
Management	62	11	3	6		82
Marketing	27	5	0	3		35
Music	32	6	0	1		39
Music Education	31	4	2	2		39

Enrollment by College, Major and Classification, Fall 2013 (continued)

	Freshmen	Sophomores	Juniors	Seniors	Graduates	Total
University College (continued)						
Physical Education	72	18	7	9		106
Political Science	25	2	3	0		30
Psychology	91	20	10	3		124
Recreation	10	0	2	0		12
Rehabilitation Services	127	12	5	3		147
Special/ Collaborative Education	4	3	2	0		9
Social Work	63	15	7	7		92
Theatre	73	10	3	5		91
Secondary Biology	14	5	1	3		23
Secondary Chemistry	2	0	1	0		3
Secondary English	13	2	0	3		18
Secondary Foreign Languages	2	0	0	0		2
Secondary General Science	5	1	1	3		10
Secondary History	17	4	2	2		25
Secondary Mathematics	7	1	0	0		8
Secondary Marketing	68	9	4	2		83
Secondary Social Science	6	1	0	1		8
Undecided	424	46	39	30		539
Subtotal	2,127	330	178	140		2,775
Unclassified (Graduate Undecided and Mas						
Non-Degree Seeking	2	1	0	0		3
Graduate Undecided					13	13
Graduate Certificate					5	5
Subtotal	2	1	0	0	18	21

Enrollment by State of Origin and Academic Level, Fall 2013

State	Undergrad	Grad/Sp	Total	State	Undergrad	Grad/Sp	Total
Alaska	4	0	4	New York	27	2	29
Alabama	3,718	613	4,331	Ohio	55	2	57
Arkansas	0	0	0	Oklahoma	3	2	5
Arizona	2	0	2	Oregon	1	0	1
California	91	4	95	Pennsylvania	6	1	7
Colorado	8	0	8	Puerto Rico	1	0	1
Connecticut	7	3	10	S. Carolina	20	1	21
DC	13	0	13	S. Dakota	1	0	1
Delaware	3	0	3	Tennessee	23	0	23
Florida	185	8	193	Texas	39	8	47
Georgia	604	36	640	Utah	0	2	2
Illinois	96	4	100	Virginia	9	3	12
Indiana	18	1	19	Virgin Island	1	0	1
Kansas	4	0	4	Washington	7	1	8
Kentucky	4	0	4	Wisconsin	13	0	13
Louisiana	19	3	22	Wyoming	1	0	1
Massachusetts	5	2	7	Subtotal	5,189	710	5,889
Maryland	28	1	29	Alberta	1	0	1
Michigan	96	3	99	Armed Forces	1	0	1
Minnesota	5	0	5	BC	2	0	2
Missouri	16	0	16	HERTS	2	0	2
Mississippi	26	6	32	Ontario	4	0	4
Montana	1	0	1	Quebec	1	0	1
N. Carolina	10	4	14	VIC	1	0	1
New Jersey	12	0	2	Unknown	155	9	164
New Mexico	1	0	1	Grand Total	5,356	719	6,075
Nevada	6	0	6				

Note: State of origin is the state of residence at the time of application to the University.

Enrollment by Alabama County of Residence and Academic Level, Fall 2013

County	Undergrad	Grad/Sp	Total	County	Undergrad	Grad/Sp	Total
Autauga	86	20	106	Jefferson	546	59	605
Baldwin	23	2	25	Lauderdale	13	1	14
Barbour	16	1	17	Lawrence	2	1	3
Bibb	1	0	1	Lee	73	21	94
Bullock	68	4	72	Limestone	6	2	8
Butler	31	6	37	Lowndes	53	2	55
Calhoun	23	4	27	Macon	102	30	132
Chambers	60	2	62	Madison	43	6	49
Cherokee	0	1	1	Marengo	23	1	24
Chilton	11	2	13	Marion	1	2	3
Choctaw	20	0	20	Mobile	278	13	291
Clarke	22	1	23	Monroe	42	4	46
Clay	0	1	1	Montgomery	1,368	304	1,672
Cleburne	1	1	2	Morgan	15	0	15
Coffee	9	2	11	Perry	20	0	20
Colbert	5	1	6	Pickens	7	0	7
Conecuh	27	1	28	Pike	15	3	18
Coosa	0	3	3	Randolph	3	0	3
Covington	6	4	10	Russell	76	6	82
Crenshaw	14	1	15	Shelby	19	9	28
Dale	15	6	21	St Clair	5	1	6
Dallas	125	24	149	Sumter	15	1	16
DeKalb	5	4	9	Talladega	53	5	58
Elmore	103	24	127	Tallapoosa	18	2	20
Escambia	27	3	30	Tuscaloosa	56	6	62
Etowah	13	1	14	Walker	9	0	9
Fayette	0	0	0	Washington	10	1	11
Franklin	1	0	1	Wilcox	42	2	44
Geneva	3	1	4	InState Total	3,718	613	4,331
Greene	10	0	10	Non-Alabama*	1,483	97	1,580
Hale	25	1	26	Unknown	155	9	164
Henry	17	1	18	Grand Total	5,356	719	6,075
Houston	38	7	45				
Jackson	0	2	2				

Note: *Non-Alabama includes both U.S. resident and non-resident aliens.

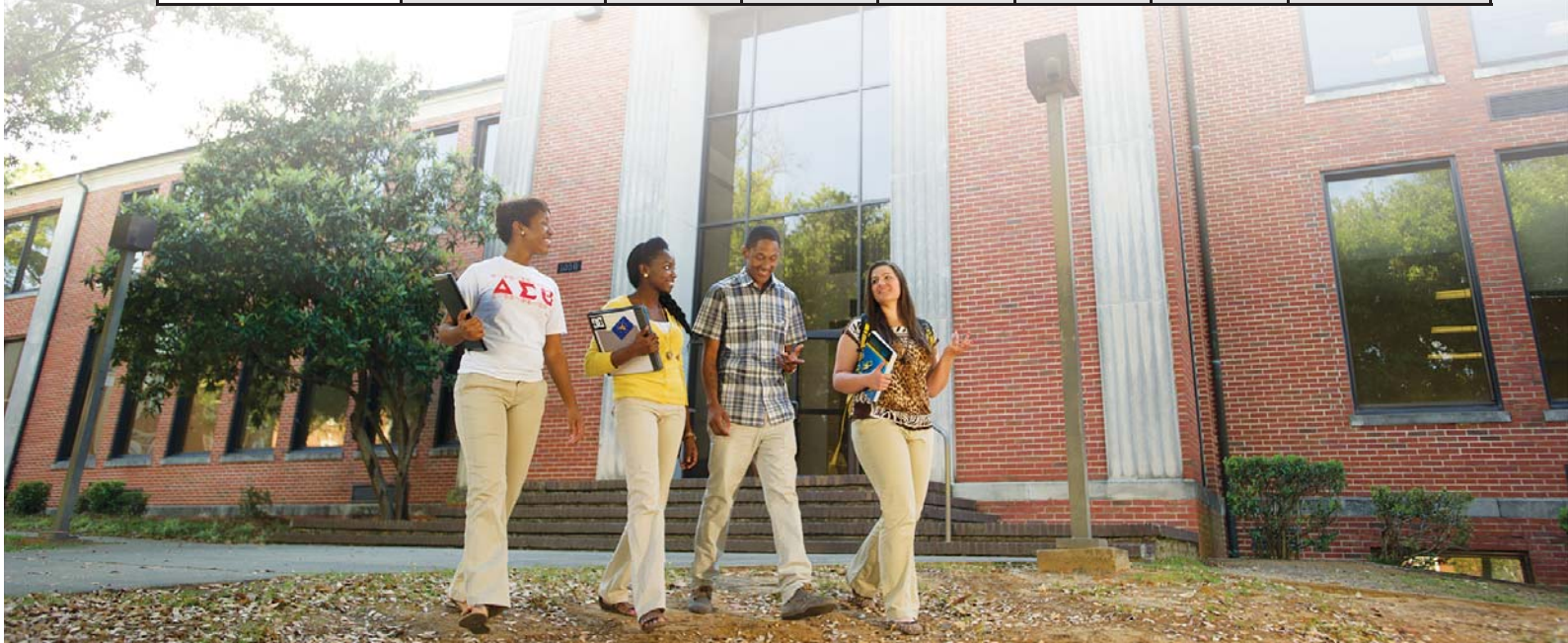


**Enrollment by Academic Load, Academic Level,
Gender and Ethnicity, Fall 2009-13**

		2008	2009	2010	2011	2012	2013	% Change over 2012
Academic Load	Full		4,561	4,833	4,600	4,966	5,182	+4%
	Part		1,003	872	825	850	893	+5%
Academic Level	Undergrad		4,638	4,882	4,743	5,130	5,356	+4%
	Grad		926	823	682	686	719	+5%
Gender	Female		3,456	3,467	3,303	3,540	3,676	+4%
	Male		2,108	2,238	2,122	2,276	2,399	+5%
Ethnicity	Black		5,319	5,336	5,095	5,422	5,530	+2%
	White		154	159	148	167	206	+23%
	Asian		6	9	10	7	14	100%
	Hispanic		18	19	36	59	71	+20%
	American Indian		3	3	1	6	9	+50%
	Native Hawaiian or other Pacific Islander			8	2	3	4	+33%
	Two or more			2	8	21	38	+81%
	International		29	40	31	49	120	>100%
	Other		2	5	6	15	24	+60%
	Unknown		33	124	88	67	59	-12%
Total			5,564	5,705	5,425	5,816	6,075	+4%

Enrollment by Classification and Residence, Fall 2009-13

		2009	2010	2011	2012	2013	% Change over 2012
Classification	Freshman	2,082	2,112	1,993	2,484	2,778	+12%
	Sophomore	940	1,042	937	952	1,055	+11%
	Juniors	724	838	838	744	708	-5%
	Seniors	868	890	975	950	593	-38%
	Ugrad Special	24					
	Graduate Special	4					
	Masters	382	539	422	436	456	+5%
	“A”/ “AA” NTFYP* Ed.S.	371	75	73	73	66	-10%
	Doctorate	169	172	164	160	179	+12%
	Unclassified		37	23	17	18	+6%
Residence	In-State	3,880	4,020	3,917	4,213	4,334	+3%
	Out-of-State	1,684	1,685	1,508	1,603	1,741	+9%



Undergrad Enrollment by Academic Unit and Major*
Fall 2009-13

College/Major	2009	2010	2011	2012	2013
Art	24	22	24	22	27
UC-Art	0	18	26	38	35
Graphic Arts	13	0	0	0	0
UC- Graphic Arts	0	0	0	0	0
Music	92	52	32	20	20
UC- Music	0	22	45	60	39
Theatre	101	98	68	51	68
UC- Theatre	0	32	64	88	91
College of Visual & Performing Arts	230	244	259	279	280
Accounting	152	109	70	47	71
UC- Accounting	0	28	53	73	60
Business Administration	10	0	0	0	0
Computer Information System	179	135	113	68	116
UC-Computer Information System	0	34	65	81	67
Economics	3	0	0	0	0
Finance	33	21	16	16	25
UC- Finance	0	15	19	24	19
Hotel Tourism Management	2	0	0	0	0
Management	252	199	123	83	111
UC- Management	0	70	98	103	82
Marketing	97	63	47	34	55
UC- Marketing	0	26	34	44	35
College of Business Administration	728	700	638	573	641
Health Information Management	71	51	30	37	53
UC- Health Information Management	0	22	29	54	44
Rehabilitation Services	0	7	35	58	189
UC- Rehabilitation Services	0	16	59	108	147
College of Health Sciences	71	96	153	257	433
Child Development	0	0	0	0	0
Human Services	0	0	0	0	0
Language Arts	1	0	0	0	0
Office Administration	6	0	0	0	0
Psychology	203	167	124	90	126
UC-Psychology	0	62	110	161	124
Recreation	97	79	66	56	120
UC- Recreation	0	6	37	42	12
Foreign Language- Spanish	2	2	0	0	0
UC-Secondary Foreign Languages				1	0

Undergrad Enrollment by Academic Unit and Major, Fall 2009-13 (Cont')

College/Major	2009	2010	2011	2012	2013
Undergrad Certification	0	0	0	0	0
Art Education	2	2	0	0	0
Biology & Secondary Education	20	19	11	7	12
UC- Biology & Secondary Education	0	16	12	20	23
Chemistry & Secondary Education	2	0	0	0	1
UC-Chemistry & Secondary Education	0	0	1	2	3
Early Childhood Education	137	93	62	50	61
UC- Early Childhood Education	0	37	59	88	63
Elementary Education	258	203	142	97	101
UC- Elementary Education	0	59	86	119	72
English & Secondary Education	58	37	30	29	33
UC-English & Secondary Education	0	11	16	23	18
UC- Foreign Languages	0	0	0	0	2
Health Education	33	27	18	11	11
UC-Health Education	0	19	28	60	51
History & Secondary Education	24	22	16	12	17
UC-History & Secondary Education	0	9	15	24	25
Math & Secondary Education	29	16	15	15	17
UC-Math & Secondary Education	0	4	9	9	8
Music Education	54	45	31	24	20
UC- Music Education	0	20	30	45	39
Physical Education	156	111	92	74	113
UC- Physical Education	0	43	108	133	106
Psychology Education	4	0	0	0	0
Science Education	6	0	0	0	0
Secondary Marketing Education	96	63	32	16	17
UC- Secondary Marketing Education	0	50	69	91	83
General Science & Secondary Education	1	5	5	3	4
UC- General Science & Secondary Education	0	4	8	13	10
Secondary/Collaborative Education	35	29	31	20	25
UC- Secondary/Collaborative Education	0	1	5	7	9
Social Science & Secondary Education	13	13	8	5	10
UC- Social Science & Secondary Education	0	4	7	10	8
Secondary Education	0	1	0	3	2
College of Education	1,237	1,279	1,283	1,360	1,346

Undergrad Enrollment by Academic Unit and Major, Fall 2009-13 (Cont')

College/Major	2009	2010	2011	2012	2013
Communications	282	215	146	109	214
Communications Studies	2	0	0	0	0
UC- Communications	0	57	124	167	143
Criminal Justice	368	253	195	155	248
UC- Criminal Justice	0	112	205	286	229
English	35	20	24	14	27
UC- English	0	3	17	23	16
History	16	14	8	8	13
UC- History	0	4	7	16	11
Foreign Language-French	0	0	0	0	0
Political Science	54	46	30	24	33
UC- Political Science	0	13	21	27	30
Speech	0	0	0	0	0
Social Work	161	121	99	78	122
UC- Social Work	0	39	86	112	92
Sociology	17	11	1	1	0
UC- Sociology	0	4	0	7	0
College of Liberal Arts & Social Science	938	912	963	1,027	1,178
Biology	400	290	220	206	294
UC- Biology	0	109	207	231	227
Chemistry	60	53	50	53	80
UC- Chemistry	0	32	69	64	43
Computer Science	75	50	31	26	41
UC- Computer Science	0	25	53	75	80
Engineering	17	0	0	0	0
UC- Engineering	0	17	30	35	31
Mathematics	51	66	44	36	50
UC- Mathematics	0	13	17	17	16
Forensic Science	0	0	0	13	31
UC-Forensic Science	0	0	0	1	43
Physics	1	0	0	0	0
Marine Biology	4	0	0	0	0
Medical Lab Technology	0	0	0	0	0
College of Science, Mathematics & Technology	608	655	721	757	936
Undecided	819	995	701	870	539
Non-Degree Seeking	6	1	25	7	3
Total Undergraduates Enrollment	4,638	4,882	4,743	5,130	5,356

*UC-University College Enrollment

**Graduate School Enrollment by Academic Unit and Major
Fall 2009-13**

College/Majors	2009	2010	2011	2012	2013
Accountancy	28	38	19	17	32
College of Business Administration	28	38	19	17	32
Administration	19	17	12	3	3
Applied Technology	0	0	0	11	23
Biology Education	33	30	23	17	16
Early Childhood Education	40	30	31	26	23
Elementary Education	141	105	81	76	56
English Education	40	26	20	17	12
Clinical & Mental Health Counseling	82	69	65	78	81
Health Education	7	4	2	5	1
History Education	14	10	7	5	3
Instructional Leadership Program	20	24	28	32	30
Language Arts	1	0	0	0	0
Library Education Media	19	23	15	12	11
Educational Leadership, Policy & Law	72	74	81	73	67
Mathematics Education	51	42	35	22	18
Music Education	8	4	6	11	6
Physical Education	32	29	18	10	12
Reading /Reading Specialist	14	8	5	5	3
School Counseling	40	26	27	21	17
Social Science Education	31	18	17	12	10
Collaborative Education	70	36	29	21	25
Teacher Leadership Program	0	0	0	0	3
College of Education	734	575	502	457	420
History	6	4	2	5	6
College of Liberal Arts and Social Science	6	4	2	5	6
Biology	13	15	8	10	12
Forensic Science	0	0	7	8	11
Mathematics	5	1	1	1	6
Microbiology	10	14	11	14	18
College of Science, Mathematics & Technology	28	30	27	33	47
Physical Therapy	87	84	72	73	94
Occupational Therapy	23	36	40	50	57
Rehabilitation Counseling	16	20	19	32	34
Prosthetics & Orthotics	0	0	0	4	11
College of Health Sciences	126	140	131	159	196
Undecided	4	35	1	13	13
Graduate Certificate	0	1	0	2	5
Total Graduate Enrollment	926	823	682	686	719

Graduate (Masters Level) Enrollment by Academic Unit And Major Fall 2009-13

College/Majors	2009	2010	2011	2012	2013
Accountancy	28	38	19	17	32
College of Business Administration	28	38	19	17	32
Administration	3	2	1	3	0
Applied Technology	0	0	0	11	23
Biology Education	1	20	7	1	1
Early Childhood Education	16	18	11	8	6
Elementary Education	74	77	46	39	20
English Education	4	19	9	5	3
Clinical & Mental Health Counseling	75	65	61	66	71
Health Education	1	3	2	1	0
History Education	1	5	3	1	2
Instructional Leadership Program	20	24	28	32	30
Language Arts	0	0	0	0	0
Library Education Media	11	17	12	7	7
Mathematics Education	3	30	21	6	6
Music Education	3	0	2	4	2
Physical Education	18	27	16	8	9
Reading /Reading Specialist	14	8	5	5	3
School Counseling	32	22	22	18	15
Social Science Education	2	13	9	4	1
Special/Collaborative Education	13	4	7	7	9
College of Education	291	354	262	226	208
History	6	4	2	5	6
College of Liberal Arts and Social Science	6	4	2	5	6
Biology	13	15	8	10	12
Forensic Science	0	0	7	8	11
Mathematics	5	1	1	1	6
College of Science, Mathematics & Technology	18	16	16	19	29
Occupational Therapy	23	36	40	50	57
Rehabilitation Counseling	16	20	19	32	34
Prosthetics & Orthotics	0	0	0	4	11
College of Health Sciences	39	56	59	86	102
Total Masters Enrollment	382	480	358	350	371

Graduate (“A” & “Aa” Certificate) Enrollment by Academic Unit And Major, Fall 2009-13

College/Major	2009	2010	2011	2012	2013
Administration	0	0	0	0	0
Early Childhood Education	1	0	0	0	0
Elementary Education	3	0	0	0	2
History Education	0	0	0	0	0
Library Education Media	0	0	2	2	3
Reading/ Reading Specialist	0	0	0	0	0
School Counseling	0	0	0	0	0
College of Education	4	0	2	2	5
Total “A” & “AA” Certificate Enrollment	4	0	2	2	5

Graduate (Alternative Fifth-Year Program) Enrollment by Academic Unit And Major, Fall 2009-13

College/Majors	2009	2010	2011	2012	2013
Administration	0	0	0	0	0
Biology Education	31	6	11	11	11
Early Childhood Education	10	1	8	5	5
Elementary Education	44	5	11	13	13
English Education	36	7	11	12	9
Clinical & Mental Health Counseling	6	0	0	0	0
Health Education	6	1	0	4	1
History Education	11	3	2	1	1
Language Arts	1	0	0	0	0
Mathematics Education	44	8	11	13	10
Music Education	5	4	4	7	4
Physical Education	14	2	2	2	3
Reading /Reading Specialist	0	0	0	0	0
School Counseling	0	0	0	0	0
Social Science Education	26	3	4	3	6
Collaborative Education	57	32	22	14	16
College of Education	285	72	86	85	80
Total Alternative Fifth-Year Enrollment	285	72	86	85	80

Graduate (Education Specialist Degree) Enrollment by Academic Unit And Major, Fall 2009-13

College/Major	2009	2010	2011	2012	2013
Administration	16	15	11	3	3
Biology Education	1	4	5	4	4
Early Childhood Education	13	11	12	12	12
Elementary Education	20	23	24	24	23
Clinical & Mental Health Counseling	7	4	4	12	10
History Education	2	2	2	2	0
Library Education Media	8	6	3	5	4
Mathematics Education	4	4	3	3	2
Reading /Reading Specialist	0	0	0	0	0
School Counseling	8	4	5	3	2
Social Science Education	3	2	4	5	3
Teacher Leadership Program	0	0	0	0	3
College of Education	82	75	73	73	66
Total Education Specialist Enrollment	82	75	73	73	66

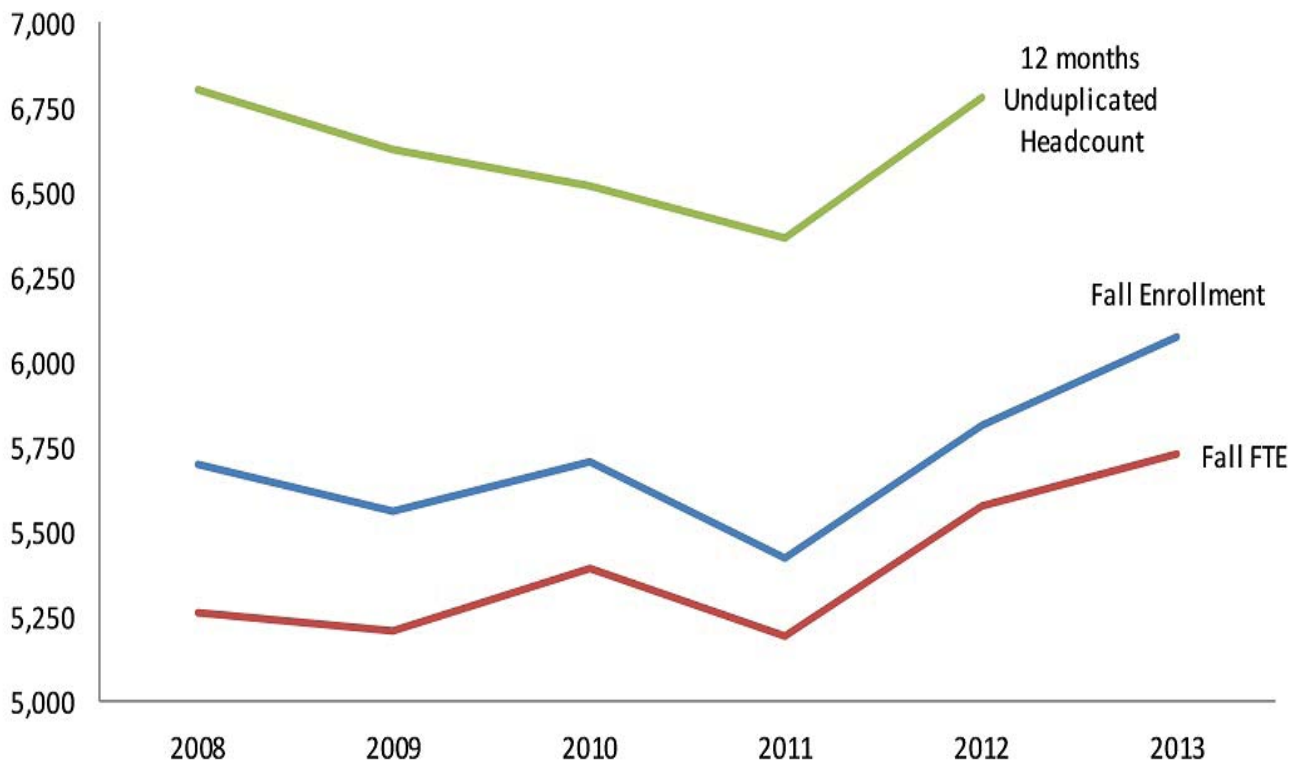
Graduate (Doctorate Level) Enrollment By Academic Unit And Major Fall 2009-13

College/Major	2009	2010	2011	2012	2013
Microbiology	10	14	11	14	18
College of Science, Mathematics & Technology	10	14	11	14	18
Educational Leadership, Policy and Law	72	74	81	73	67
College of Education	72	74	81	73	67
Physical Therapy	87	84	72	73	94
College of Health Sciences	87	84	72	73	94
Total Doctorate Enrollment	169	172	164	160	179

**Total Fall Enrollment Full-Time Equivalent (FTE) and
12-Month Unduplicated Headcount, 2008-13**

	2008	2009	2010	2011	2012	2013	% Change over 2012
Fall Enrollment	5,695	5,564	5,705	5,425	5,816	6,075	+4%
FTE (Fall Term)	5,265	5,211	5,391	5,192	5,575	5,731	+3%
	2008-09	2009-10	2010-11	2011-12	2012-13	2013-14	% Change over 2012
Unduplicated Headcount (12 months)	6,806	6,625	6,517	6,368	6782	N/A	N/A

**Figure 3. Total Fall Enrollment FTE and
12-Month Unduplicated Headcount, 2008-13**



Total Enrollment by County, 2009-13

Counties	2009	2010	2011	2012	2013
Autauga	71	83	84	87	106
Baldwin	16	22	20	19	25
Barbour	18	19	14	17	17
Bibb			1	1	1
Bullock	43	40	49	69	72
Butler	31	40	37	41	37
Calhoun	6	14	19	32	27
Chambers	54	57	52	61	62
Cherokee	1	1	2	1	1
Chilton	29	23	16	16	13
Choctaw	19	22	16	16	20
Clarke	16	23	21	22	23
Clay	1	3	2	2	1
Cleburne				1	2
Coffee	15	15	15	12	11
Colbert	2	5	3	5	6
Conecuh	25	23	22	30	28
Coosa	4	8	6	5	3
Covington	15	18	15	14	10
Crenshaw	12	13	13	13	15
Dale	18	21	21	22	21
Dallas	165	182	168	160	149
DeKalb	1	2	4	4	9
Elmore	68	82	99	103	127
Escambia	18	30	19	28	30
Etowah	25	22	11	11	14
Fayette	1	2		1	0
Franklin					1
Geneva	2	2	2	4	4
Greene	13	10	16	17	10
Hale	31	31	34	30	26
Henry	10	10	13	20	18
Houston	25	27	25	44	45
Jackson	1	3	4	2	2
Jefferson	607	604	579	611	605
Lauderdale	8	9	10	15	14

Total Enrollment by County, 2009-13 (continued)

Counties	2009	2010	2011	2012	2013
Lawrence	10	8	6	3	3
Lee	58	71	55	82	94
Limestone	2	5	6	7	8
Lowndes	57	62	59	67	55
Macon	106	109	107	139	132
Madison	41	47	41	52	49
Marengo	35	30	33	24	24
Marion		1	1	2	3
Marshall	1	2	1	0	0
Mobile	304	327	282	285	291
Monroe	31	31	37	40	46
Montgomery	1,341	1,507	1,545	1,615	1,672
Morgan	9	8	9	11	15
Perry	38	38	24	16	20
Pickens	9	7	7	5	7
Pike	22	21	15	17	18
Randolph	3	2	1	3	3
Russell	44	58	75	94	82
Shelby	3	31	28	24	28
St. Clair	25	4	5	3	6
Sumter	18	13	10	14	16
Talladega	51	56	38	47	58
Tallapoosa	36	37	28	25	20
Tuscaloosa	40	35	45	55	62
Walker	3	5	3	5	9
Washington	5	14	13	10	11
Wilcox	24	26	27	32	44
Winston					
Out-of-State/ Country	188	1,685	1,512	1,603	1,580
Unknown	8		53		164
Total	3,880	5,706	5,425	5,816	6,075

Enrollment in University Housing, Fall 2013

University Housing	Capacity Occupancy	Students Enrolled	Occupancy Rate
Abercrombie Hall Male	129	128	99%
Bibb Graves Hall Female	130	130	100%
Simpson Hall Female	167	166	99%
Bessie Benson Hall Female	145	140	97%
George N. Card Hall Male	119	118	99%
Girard Apartments Female	33	33	100%
Girard Apartments Male	31	24	77%
W. McGinty Female	31	31	100%
W. McGinty Male	29	27	93%
Peyton Finley Dorms Female	63	63	100%
Peyton Finley Dorms Male	0	0	0%
New Facility I Female	118	118	100%
New Facility I Male	138	138	100%
New Facility II Female	180	180	100%
New Facility II Male	64	64	100%
Bessie Estell Hall Female	217	213	98%
Martin Luther King Male	214	211	99%
C. J. Dunn Towers Female	478	419	88%
Woodside Glenn Female	200	158	79%
Woodside Glenn Male	0	0	0%
Vaughn Meadows Female	47	47	100%
Vaughn Meadows Male	54	54	100%
Total Females	1,809	1,469	81%
Total Males	777	765	98%
Grand Total	2,586	2,234	86%



New Students

First-time Freshmen by Full-Time/Part-Time Status, Gender, Ethnicity and Residence, Fall 2013

		Full-Time	Part-Time	Total
Gender	Male	621	7	628
	Female	896	18	914
	Total	1,517	25	1,542
Ethnicity	Black	1,380	23	1,403
	White	17	1	18
	Hispanic	15	0	15
	American Indian	2	0	2
	Asian	4	0	4
	International	68	0	68
	Other	4	0	4
	Two or more	22	0	22
	Race/Unknown	5	1	6
	Total	1,517	25	1,542
Residence	In-State	883	19	902
	Out-of-State	634	6	640
	Total	1,517	25	1,542

First-time Freshmen by Gender, Ethnicity and Residence, Fall 2009-13

		2009	2010	2011	2012	2013	% Change over 2012
Gender	Male	518	498	494	620	628	+1%
	Female	703	603	612	859	914	+6%
	Total	1,221	1,101	1,106	1,479	1,542	+4%
Ethnicity	Black	1,187	994	1,057	1,393	1,403	+1%
	White	6	10	11	22	18	-18%
	Asian	1		2	2	2	0%
	Hispanic	6	4	17	19	15	-21%
	American Indian			1	1	4	>100%
	International	6	7	6	17	68	>100%
	Other	2	7	2	8	4	-50%
	Two or more		1	3	10	22	>100%
	Race/ Unknown	13	78	7	6	6	0%
	Total	1,221	1,101	1,106	1,479	1,542	+4%
Residence	In-State	704	692	708	971	902	-7%
	Out-of-State	517	409	398	508	640	+26%
	Total	1,221	1,101	1,106	1,479	1,542	+4%
	In-State Pct.	57%	63%	64%	66%	59%	-11%

Average ACT, SAT and High School GPA for First-time Freshmen, Fall 2009-13

	2009	2010	2011	2012	2013
ACT Composite Score	16.5	17.2	17.3	17.5	17.5
SAT Verbal	440	416	426	427	435
SAT Mathematics	420	415	427	424	430
High School GPA	2.93	2.75	2.76	2.80	2.89

**New Transfer Students by Gender, Ethnicity,
Residence and Classification, Fall 2013**

		Full-Time	Part-Time	Total
Gender	Male	87	9	95
	Female	113	16	128
	Total	198	25	223
Ethnicity	Black	163	20	183
	White	12	2	14
	Hispanic	1	0	1
	Asian	1	0	1
	American Indian	1	0	1
	International	14	3	17
	Two Or More	4	0	4
	Unknown	0	0	0
	Other	2	0	2
	Total	198	25	223
Residence	In-State	135	20	155
	Out-Of-State	63	5	68
	Total	198	25	223
Classification	Freshmen			
	Sophomore			
	Junior			
	Senior			
	Total			

New Transfer Students by Gender, Classification, Ethnicity and Residence, 2009-13

		2009	2010	2011	2012	2013	% Change over 2012	
Gender	Male	93	130	95	70	95	+36%	
	Female	118	155	141	125	128	+2%	
	Total	211	285	236	195	223	+14%	
Classification	Freshmen	96	183	148	102	101	-1%	
	Sophomore	72	57	55	58	89	+53%	
	Junior	28	41	32	34	33	-3%	
	Senior	13	4	1	1	0	-100%	
	Undergraduate Special	2						
	Total	211	285	236	195	223	+14%	
	Ethnicity	Black	197	261	214	181	183	+1%
		White	4	9	10	6	14	>100%
	Hispanic	2	2	2	1	1	0%	
	American Indian				1	1	0%	
	Asian			1		1		
	International		3	2	3	17	>100%	
	Two Or More		1	1	1	4	>100%	
	Race, Unknown	8	9	6	1	0	-100%	
	Other					2		
	Total	211	285	236	195	223	+14%	
Residence	In-State	168	207	184	157	155	-1%	
	Out-Of-State	43	78	52	38	68	+79%	
	Total	211	285	236	195	223	+14%	

New Graduate by Full-time/Part-time Status, Gender, Ethnicity and Residence, Fall 2013

		Full-Time	Part-Time	Total
Gender	Male	38	26	64
	Female	84	52	136
	Total	122	78	200
Ethnicity	Black	74	64	138
	White	36	9	45
	Hispanic	2	1	3
	American Indian	0	1	1
	Asian	2	1	3
	International	4	1	5
	Other	3	0	3
	Two Or More	0	0	0
	Race/Unknown	1	1	2
	Total	122	78	200
	In-State	88	59	147
	Out-Of-State	34	19	53
	Total	122	78	200

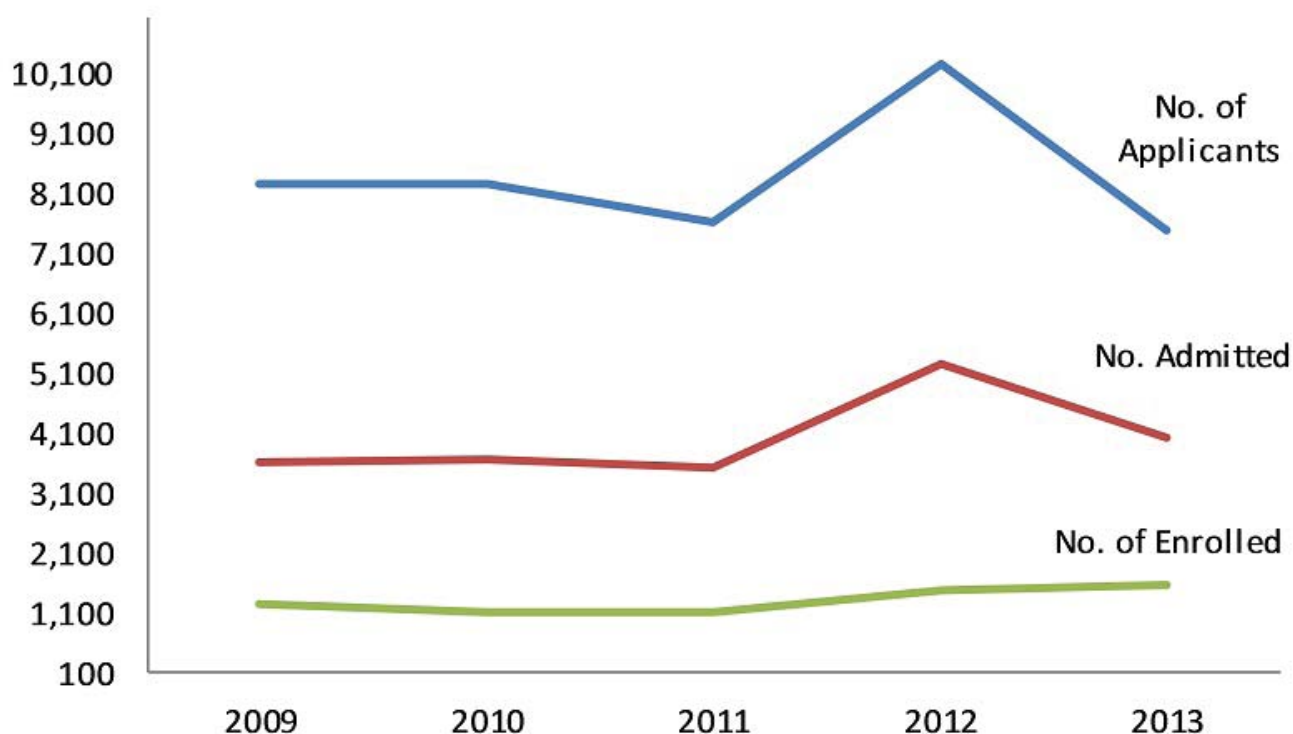


Admission

**Number of First-Time, First-Year (Freshmen) Applicants,
Admitted and Enrolled, Fall 2009-13**

	Fall 2009	Fall 2010	Fall 2011	Fall 2012	Fall 2013
No. of Applicants	8,229	8,231	7,592	10,245	7,446
No. Admitted	3,598	3,641	3,495	5,251	4,036
% of Applied Admitted	44%	44%	46%	51%	54%
No. of Enrolled	1,221	1,101	1,106	1,479	1,542
% of Admitted Enrolled	33.93%	33.1%	31.6%	28.17%	38.21%

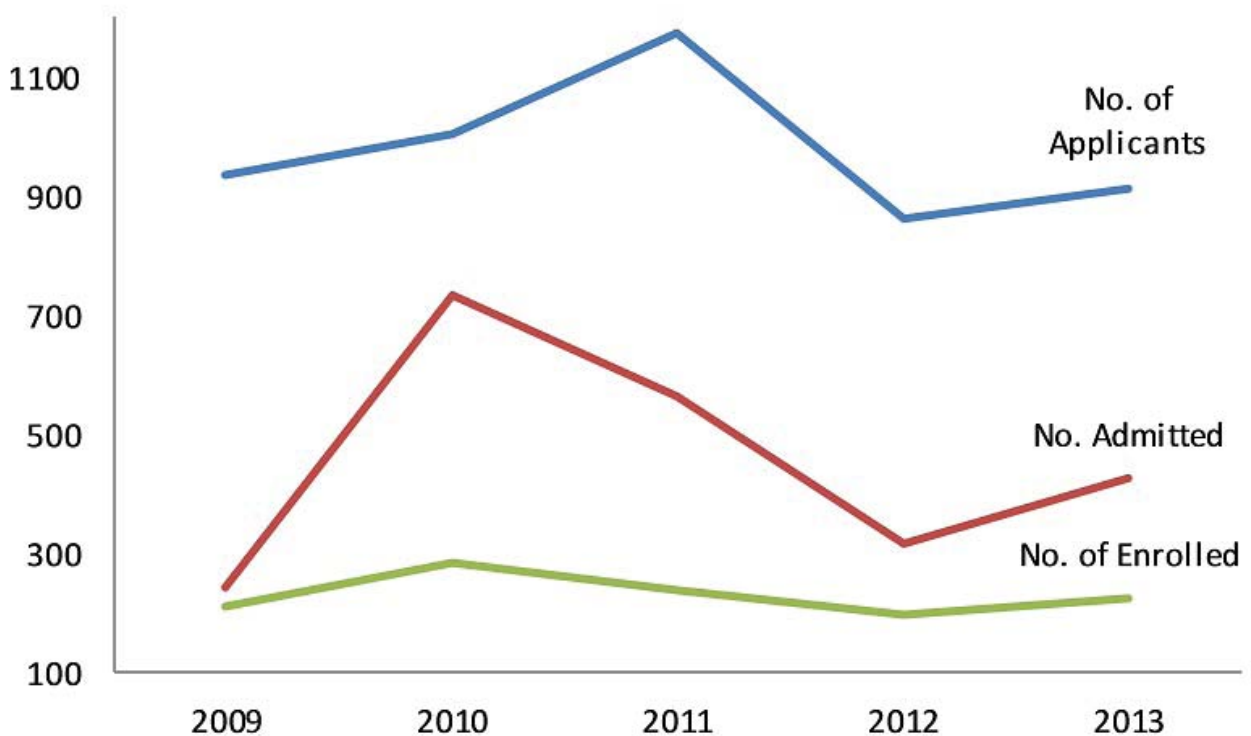
**Figure 4. Number of First-Time, First-Year (Freshmen) Applicants,
Admitted and Enrolled, Fall 2009-13**



**Number of Transfer Student Applicants,
Admitted and Enrolled, Fall 2009-13**

	Fall 2009	Fall 2010	Fall 2011	Fall 2012	Fall 2013
No. of Applicants	937	1,004	1,172	863	914
No. Admitted	241	734	563	315	424
% of Applied Admitted	25.7%	73.11%	48.04%	36.5%	46.4%
No. of Enrolled	211	285	236	195	223
% of Admitted Enrolled	87.5%	38.83%	41.92%	61.99%	52.6%

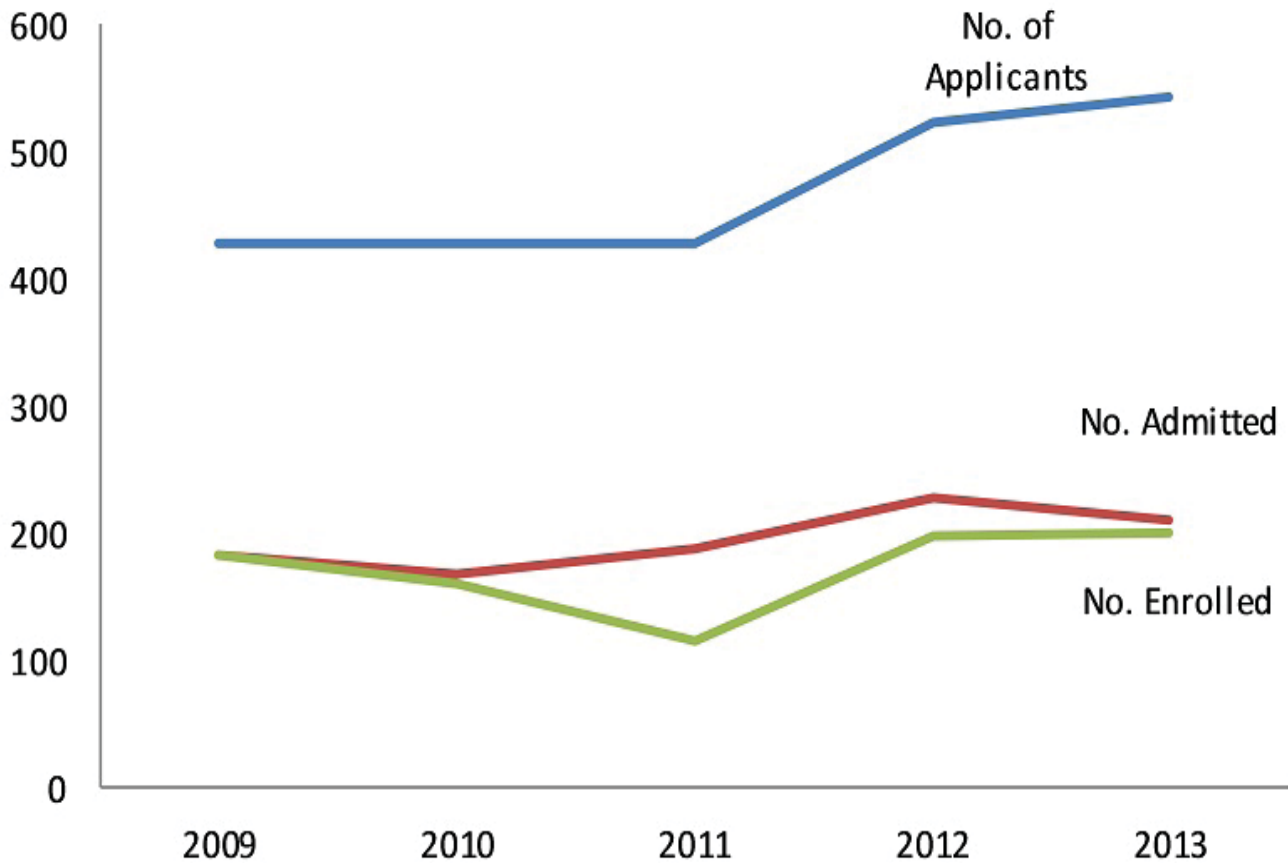
**Figure 5. Number of Transfer Student Applicants,
Admitted and Enrolled, Fall 2009-13**



Number of Graduate Applicants, Admitted and Enrolled, Fall 2009-13

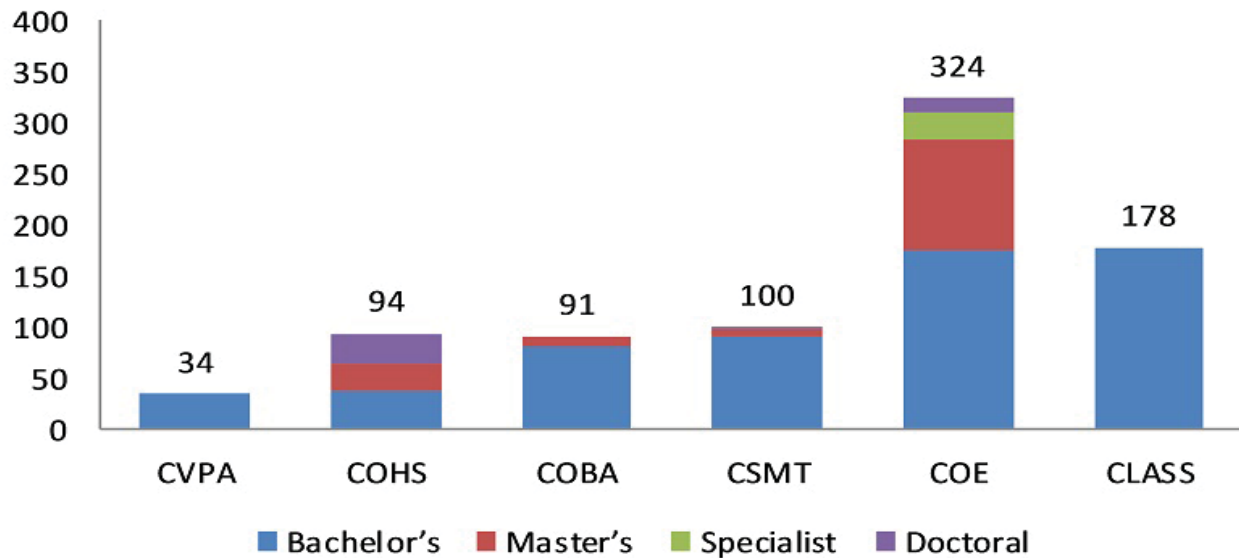
	Fall 2009	Fall 2010	Fall 2011	Fall 2012	Fall 2013
No. of Applicants	428	427	427	524	542
No. Admitted	183	168	187	227	211
% of Applied Admitted	42.7%	37.7%	26.9%	37.7%	38.9%
No. Enrolled	183	161	115	198	200
% of Admitted Enrolled	100%	95.8%	61.4%	87.2%	94.7%

Figure 6. Number of Graduate Applicants, Admitted and Enrolled, Fall 2009-13



Graduation Information

Figure 7. Degrees Conferred by College and Degree Level, 2012-2013 (Summer, Fall, Spring)



Degrees Conferred by College and Degree level, 2012-2013 (Summer, Fall, Spring)

College	Degree Level				Total
	Bachelor's	Master's	Specialist	Doctoral	
College of Liberal Arts & Social Sciences	178	0	0	0	178
College of Business Administration	82	9	0	0	91
College of Education	176	107	27	14	324
College of Health Sciences	38	25	0	31	94
College of Science, Mathematics & Technology	91	6	0	3	100
College of Visual & Performing Arts	34	0	0	0	34
Total	599	147	27	48	821

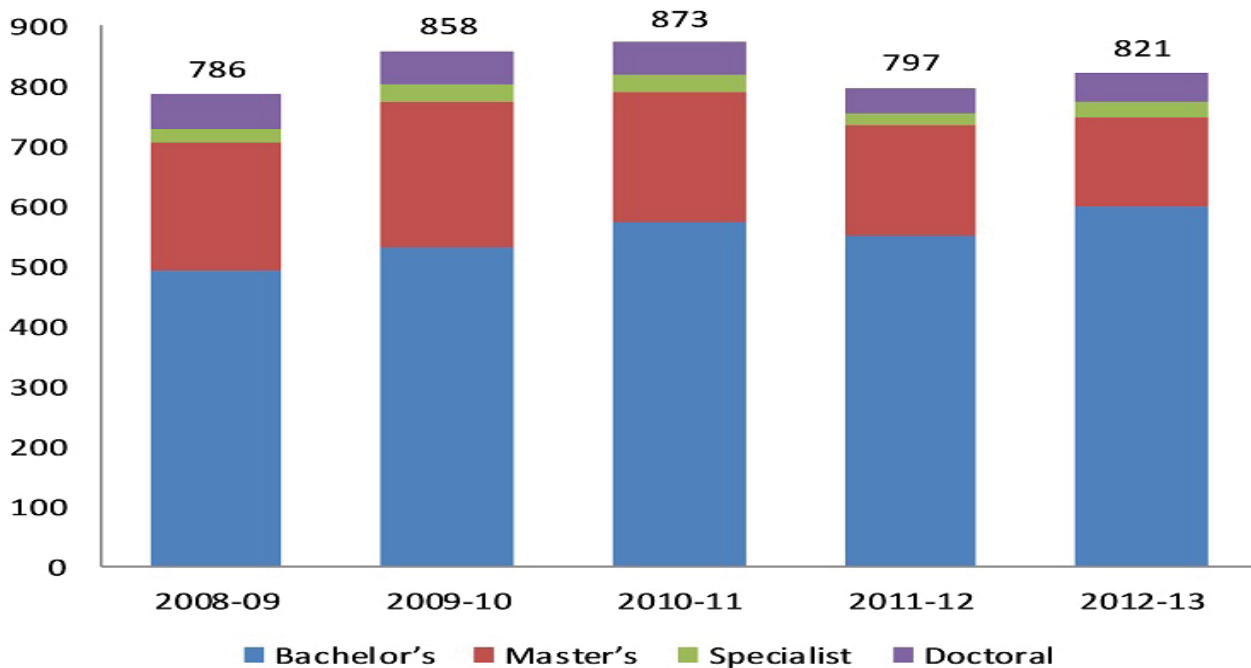
**Degrees Conferred by Degree Level and Gender,
2012-13 (Summer, Fall, Spring)**

Gender	Degree Level				Total
	Bachelor	Master	Specialist	Doctoral	
Female	418	115	22	28	583
Male	181	32	5	20	238
Total	599	147	27	48	821

**Degrees Conferred by Degree Level,
2008-09 through 2012-13 (Summer, Fall, Spring)**

Degree Level	Year				
	2008-09	2009-10	2010-11	2011-12	2012-13
Bachelor's	493	530	574	550	599
Master's	211	242	215	184	147
Specialist	24	32	30	20	27
Doctoral	58	54	54	43	48
Total	786	858	873	797	821

**Figure 8. Degrees Conferred by Level,
2008-09 through 2012-13 (Summer, Fall, Spring)**



**Degrees Conferred by Academic College, Program, and Degree Level,
2012-2013 (Summer, Fall, Spring)**

CIP	Major	Bachelor's	Master's	Specialist	Doctoral	Total
College of Liberal Arts & Social Sciences						
09.0101	Communication	44	0	0	0	44
23.0101	English	11	0	0	0	11
43.0104	Criminal Justice	71	0	0	0	71
44.0701	Social Work	39	0	0	0	39
45.1001	Political Science	9	0	0	0	9
54.0101	History	4	0	0	0	4
Subtotal		178	0	0	0	178
College of Business Administration						
11.0401	Computer Information Systems	18	0	0	0	18
52.0201	Business Management & Administration	27	0	0	0	27
52.0801	Banking And Finance	6	0	0	0	6
52.1401	Marketing & Purchasing	13	0	0	0	13
52.0301	Accounting/Accountancy	18	9	0	0	29
Subtotal		82	9	0	0	91
College of Education						
13.1001	Special Education (MR)	10	9	0	0	14
13.1202	Elementary Education	52	0	0	0	60
13.1205	Secondary Education	19	5	0	0	30
13.1210	Pre-Elementary Education	15	7	0	0	23
13.1312	Music Education	5	0	0	0	5
13.1314	Physical Education	27	0	0	0	29
31.0301	Parks and Recreation Management	11	0	0	0	11
42.0101	Psychology	37	0	0	0	37
13.0401	Educational Leadership and Administration, general	0	10	0	12	24
13.0501	Library Educational Media	0	4	0	0	3
13.1101	School Counseling	0	3	0	0	3
13.1206	P-12 Education	0	58	0	0	60
11.1099	Applied Technology	0	0	0	0	0
44.9999	Agency Counseling	0	11	0	0	8
13.0101	Education	0	0	27	0	17
Subtotal		176	107	27	14	324

Degrees Conferred by Academic College, Program, and Degree Level, 2012-2013 (Summer, Fall, Spring) continued

CIP	Major	Bachelor's	Master's	Specialist	Doctoral	Total
College of Science, Mathematics and Technology						
11.0701	Computer Science	9	0	0	0	9
26.0101	Biology	62	2	0	0	68
26.0502	Microbiology	0	0	0	3	3
26.1302	Marine Biology	0	0	0	0	0
27.0101	Mathematics	12	0	0	0	12
40.0501	Chemistry	9	0	0	0	9
43.0106	Forensic Science	0	4	0	0	4
Subtotal		91	6	0	3	100
College of Health Science						
51.0706	Health Information Management	12	0	0	0	12
51.2399	Rehabilitation Services	26	0	0	0	26
51.2310	Rehabilitation Counseling	0	9	0	0	9
51.2307	Prosthetics and Orthotics	0	0	0	0	0
51.2306	Occupational Therapy	0	16	0	0	16
51.2308	Physical Therapy	0	0	0	31	31
Subtotal		38	25	0	31	94
College of Visual & Performing Arts						
50.0501	Theatre	23	0	0	0	23
50.0901	Music	7	0	0	0	7
50.0701	Art	4	0	0	0	4
Subtotal		34	0	0	0	34
Grand Total		599	147	27	48	821

Note: Alt-A students are included in the Master's



**Number of Bachelor Degrees Conferred by Field of Study,
2008-09 through 2012-13 (Summer, Fall, Spring)**

Field of Study	2008-09	2009-10	2010-11	2011-12	2012-13
Accounting	12	25	18	23	18
Art	2	9	6	3	7
Biology	47	53	61	48	62
Chemistry	6	3	3	6	9
Communications	38	52	40	43	44
Computer Information Systems	31	22	33	31	18
Computer Science	4	12	12	8	9
Criminal Justice	53	55	60	54	71
Early Childhood Education	13	9	10	9	15
Elementary Education	41	41	42	37	50
English	8	8	5	10	11
Finance	4	8	7	2	6
Health and Physical Education	19	31	25	32	29
Health Information Management	14	14	19	12	12
History	6	3	1	6	4
Management	31	24	35	38	27
Marketing	13	15	20	13	13
Marine Biology		0	0	0	0
Mathematics	10	12	7	16	11
Music	12	6	4	5	4
Music Education	3	1	5	1	5
Political Science	11	8	10	5	9
Psychology	33	31	47	35	37
Recreation	19	16	18	18	11
Rehabilitation Services		0	0	18	26
Secondary Biology		1	1	3	1
Secondary English	2	6	3	8	11
Secondary History		0	7	4	2
Secondary Mathematics	1	0	1	0	2
Secondary Marketing	4	2	3	1	3
Secondary Chemistry		1	0	0	0
Secondary/Collaborative Education	7	9	4	7	10
Secondary Social Science Education	1	1	0	0	0
Social Work	30	37	47	40	39
Sociology	2	2	3	0	0
Theatre	16	13	17	14	23
TOTAL	493	530	574	550	599

Number of Master Degrees Conferred by Field of Study 2008-09 through 2012-13 (Summer, Fall, Spring)

FIELD OF STUDY	2008-09	2009-10	2010-11	2011-12	2012-13
Accountancy	12	13	18	24	9
Administration	25	67	1	3	
Biology	6		7	2	2
Biology Education	13	8	11	6	5
Early Childhood Education	12	9	6	14	7
Elementary Education	28	33	46	22	28
English Education & Secondary Education	10	7	12	13	11
Forensic Chemistry		0	0	0	4
General Counseling	18	11	16	13	11
Health Education	1		4	2	1
History		1	2	0	0
History Education	4	3	2	0	0
Instructional Leadership Program			3	13	10
Library Education Media	8	1	5	7	4
Mathematics		0	1	3	0
Mathematics Education	17	10	15	10	3
Music Education	1		4	1	2
Occupational Therapy		2	6	11	16
Reading Specialist	1	4	1	1	2
Rehabilitation Counseling	8	3	8	9	9
Physical Education	6	13	17	6	5
School Counseling	11	11	9	6	3
Social Science Education	6	8	4	5	6
Special/Collaborative Education	24	38	17	13	9
Total	211	242	215	184	147

**Number of Education Specialist Degrees Conferred by Field of Study
2008-09 through 2012-13 (Summer, Fall, Spring)**

FIELD OF STUDY	2008-09	2009-10	2010-11	2011-12	2012-13
Administration	18	13	14	8	5
Biology Education		0	0	0	1
Elementary Education	1	4	5	6	6
Early Childhood Education		1	1	1	9
General Counseling		3	3	0	0
Library Education Media		5	3	2	1
Mathematics		1	1	0	3
School Counseling	5	5	3	3	1
Social Science Education		0	0	0	1
Total	24	32	30	20	27

**Number of Doctoral Degrees Conferred by Field of Study
2008-09 through 2012-13 (Summer, Fall, Spring)**

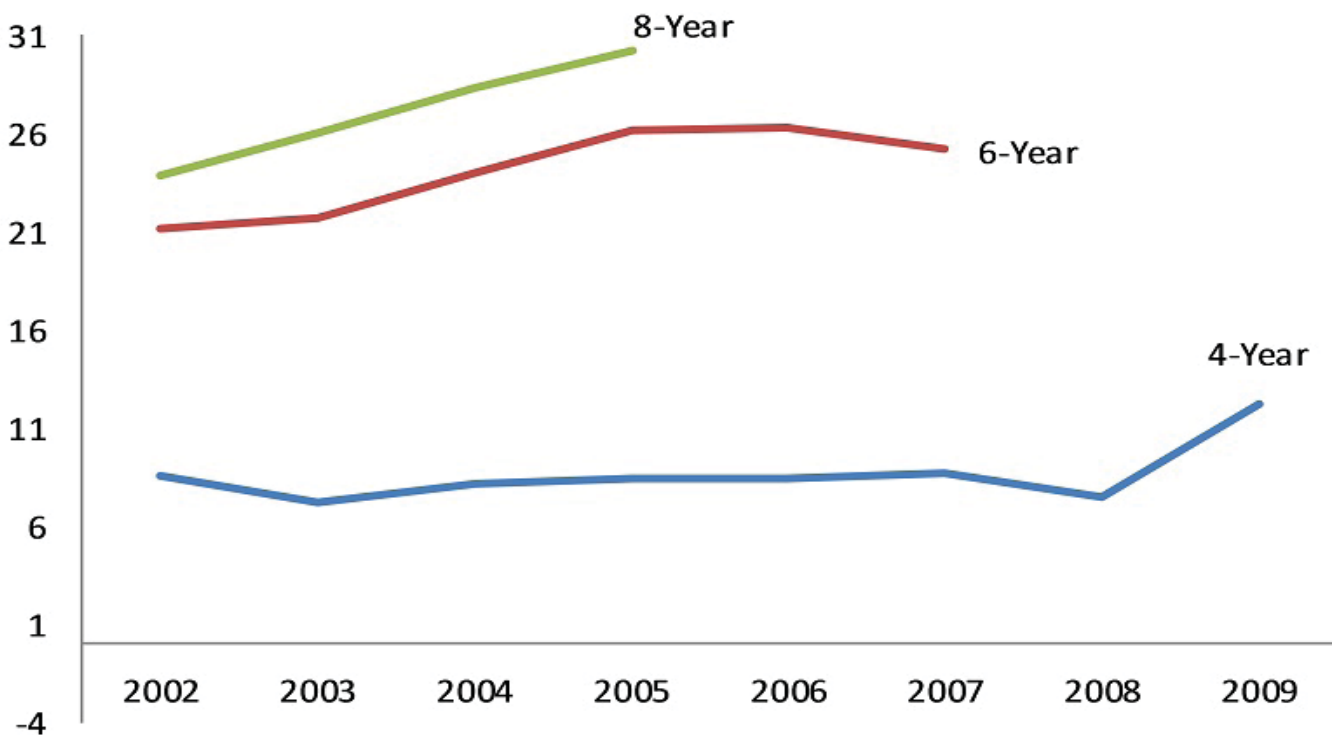
FIELD OF STUDY	2008-09	2009-10	2010-11	2011-12	2012-13
Educational Leadership, Policy and Law	8	8	9	10	14
Microbiology		0	3	0	3
Physical Therapy	50	46	42	33	31
Total	58	54	54	43	48

Retention and Graduation Rate

Four-Year, Six-Year and Eight-Year Graduation Rates for First-Time Full-Time Undergraduates, Entering Cohorts 2002-09

Cohort	4 Year Graduation Rate	6 Year Graduation Rate	8 Year Graduation Rate
2002	8.6	21.2	23.8
2003	7.2	21.7	26.0
2004	8.2	24.0	28.3
2005	8.4	26.2	30.2
2006	8.4	26.3	
2007	8.7	25.2	
2008	7.5		
2009	12.2		

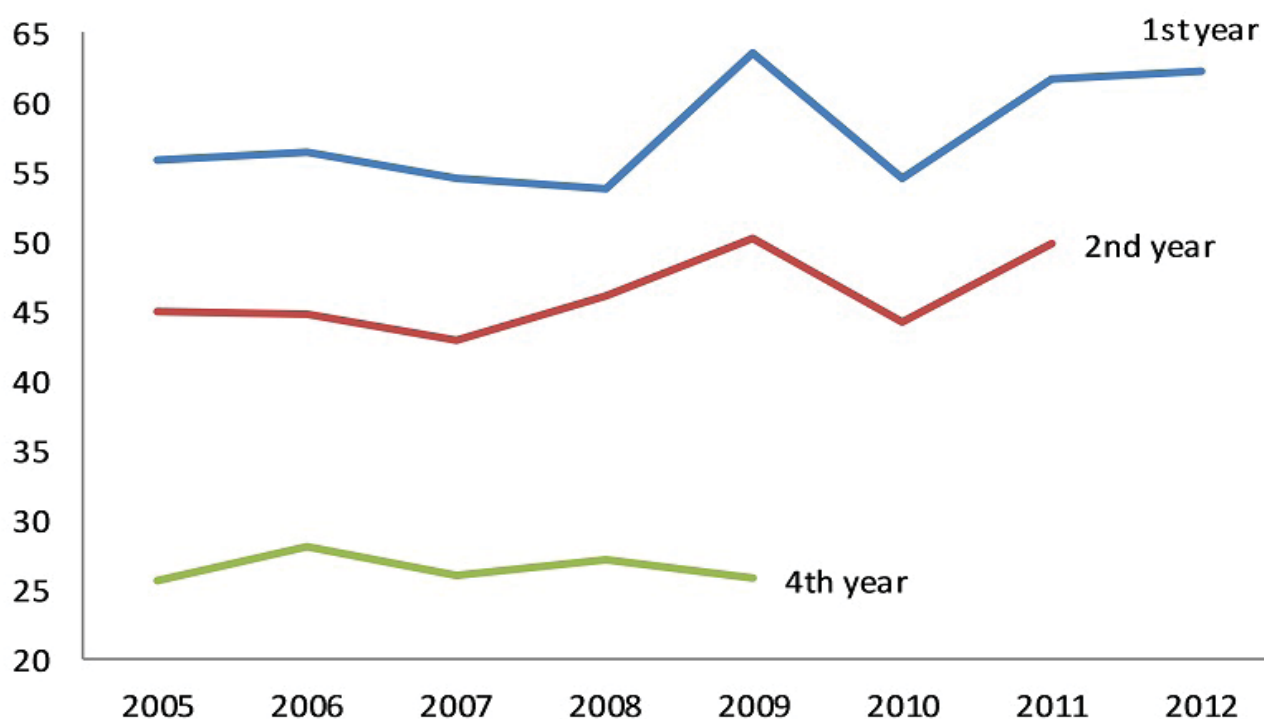
Figure 9. Four-Year, Six-Year and Eight-Year Graduation Rates for First-Time Full-Time Undergraduates, Entering Cohorts 2002-09



First-Year, Second-Year and Fourth-Year Retention Rates for First-Time Full-Time Undergraduates, Entering Cohorts 2005-12

Cohort	1st year retention	2nd year retention	4th year retention
2005	55.9	45.0	25.6
2006	56.4	44.7	28.0
2007	54.5	43.0	26.0
2008	53.8	46.1	27.1
2009	63.5	50.2	25.8
2010	54.5	44.3	
2011	61.6	49.9	
2012	62.2		

Figure 10. First-Year, Second-Year and Fourth-Year Retention Rates for First-Time Full-Time Undergraduates, Entering Cohorts 2005-12



Employee Information

University Employees* by Full-Time/Part-Time Status, Ethnicity and Gender, Oct. 31, 2013

Ethnicity	Instructional Staff			Non-instructional staff		
	Full-time	Part-time	Total	Full-time	Part-time	Total
Nonresident Alien					1	1
Hispanic/Latino	4	1	5	4	2	6
American Indian or Alaska Native	2		2	1	1	2
Asian	26	1	27	10	1	11
Black	153	95	248	602	97	699
Native Hawaiian or Other Pacific Islander	1		1	1	0	1
White	68	26	94	36	10	46
Two or more races					1	1
Unknown	20	12	32	3	1	4
Total	274	135	409	657	114	771
Gender						
Male	129	62	191	280	35	315
Female	145	73	218	377	79	456
Total	274	135	409	657	114	771

* Graduate assistants are not included.


**University Employees by Occupational Classification,
Full-Time/Part-Time Status and Gender, Oct. 31, 2013**

Category	Full-time			Part-time		
	Male	Female	Total	Male	Female	Total
Instruction/Research/Public Service	129	145	274	62	73	135
Research Staff	2	2	4		2	2
Archivists, Curators, and Museum Technician (25-4010)	4	1	5	0	1	1
Librarian (25-4020)	5	9	14	0	3	3
Library Technicians (25-4030)	6	3	9	0	2	2
Student and Academic Affairs and Other Education Services (25-2000+25-3000+25-9000)	9	36	45	0	4	4
Management Occupations (11-0000)	43	37	80	0	0	0
Business and Financial Operations Occupations (13-0000)	6	34	40	0	0	0
Computer, Engineering, and Science Occupations (15-0000+17-0000+19-0000)	22	18	40	1	0	1
Community, Social Service, Legal, Arts, Design, Entertainment, Sports and Media Occupations (21-0000+23-0000+27-0000)	49	37	86	11	6	17
Healthcare Practitioners and Technical Occupations (29-0000)	1	3	4	0	1	1
Service Occupations (31-0000+33-0000+35-0000+37-0000+39-0000)	80	74	154	2	5	7
Sales and Related Occupations (41-0000)	1	6	7	0	0	0
Office and Administrative Support Occupations (43-0000)	12	105	117	19	53	72
Natural Resources, Construction, and Maintenance Occupations (45-0000+47-0000+49-0000)	37	5	42	0	0	0
Production, Transportation, and Material Moving Occupations (51-0000+53-0000)	3	7	10	2	2	4
Total	409	522	931	97	152	249

Full-time Faculty* by Tenure Status, Rank, and Gender, Oct. 31, 2013

Academic Rank & Gender	Tenure Status						Total	
	Tenured		On Tenure Track		Not On Tenure Track			
	No.	%	No.	%	No.	%	No.	%
Professor								
Male	34	62%	1	100%			35	61%
Female	21	38%	0	0%			21	39%
Total	55	100%	1	100%			56	100%
Associate Professor								
Male	13	31%	12	63%	2	40%	27	45%
Female	28	69%	7	37%	3	60%	38	55%
Total	41	100%	19	100%	5	100%	65	100%
Assistant Professor								
Male	3	21%	30	59%	12	44%	45	45%
Female	11	79%	21	41%	15	55%	47	55%
Total	14	100%	51	100%	27	100%	92	100%
Instructor								
Male					19	38%	19	31%
Female				0%	31	62%	31	69%
Total				0%	50	100%	50	100%
Total								
Male	50	45%	43	61%	33	40%	126	46%
Female	60	55%	28	39%	49	60%	137	54%
Total	110	100%	71	100%	82	100%	263	100%

* Only Instructional staff with faculty status are included. Academic administrators and lab instructors are not included.



Instructional Staff* by College, Load, Rank, and Gender, Oct. 31, 2013

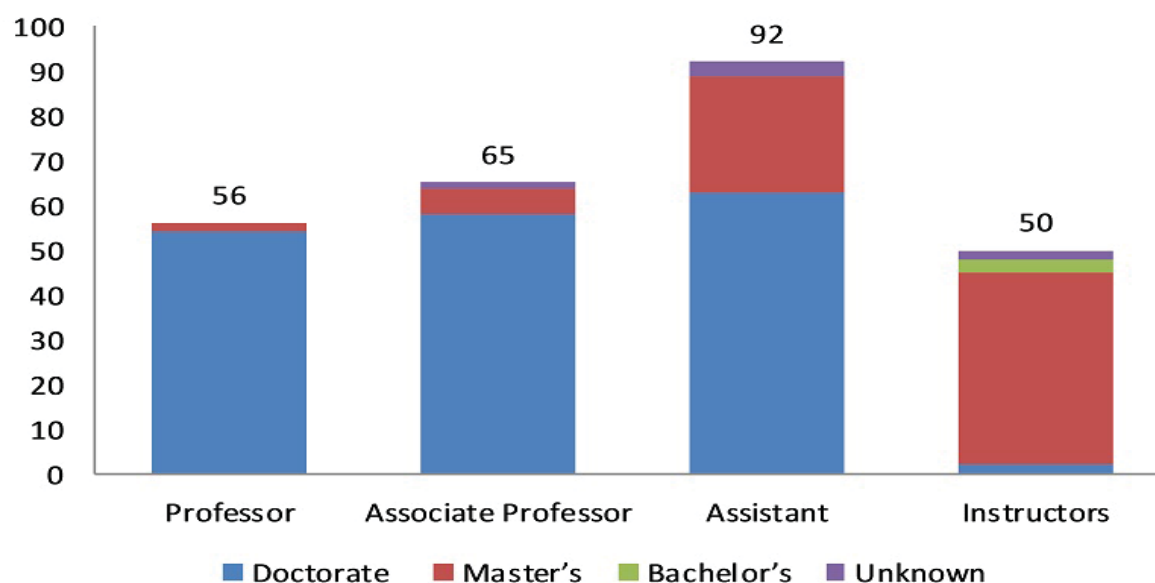
College	Full-time			Part-time			Grand Total
	M	F	Total	M	F	Total	
College of Business Administration	9	9	18	6	4	10	28
College of Education	18	31	49	17	25	42	91
College of Health Science	8	10	18	4	3	7	25
College of Liberal Arts & Social Sci.	36	37	73	16	24	40	113
College of Sci. Math. & Tech.	30	22	52	13	6	19	71
College of Visual & Performing Arts	18	11	29	6	5	11	40
University College	7	17	24		4	4	28
Grand Total	126	137	263	62	71	133	396

* Only Instructional staff with faculty status are included. Academic administrators and Lab instructors are not included.

Highest Degree attained by Full-time Faculty by Academic Rank

Academic Rank	Doctorate	Master's	Bachelor's	Unknown	Total
Professor	54	2			56
Associate Professor	58	6		1	65
Assistant	63	26		3	92
Instructors	2	43	3	2	50
Total	177 (67%)	77 (29%)	3 (1%)	6 (2%)	263

Figure 11. Highest Degrees Earned by Full-Time Faculty, Oct. 31, 2013



University Employees by Full-Time/Part-Time Status and Gender, 2009-13

Status	2009		2010		2011		2012		2013	
	No.	%	No.	%	No.	%	No.	%	No.	%
Full-time	871	77%	896	77%	897	83%	939	79%	931	79%
Part-time	259	23%	264	23%	185	17%	253	21%	249	21%
Total	1,130	100%	1,160	100%	1,082	100%	1,192	100%	1,180	100%
Gender										
Male	472	42%	487	44%	480	44%	513	43%	506	43%
Female	658	58%	673	56%	602	56%	679	57%	674	57%
Total	1,130	100%	1,160	100%	1,082	100%	1,192	100%	1,180	100%

* Graduate assistant are not included.

Physical Facilities

Building Inventory, Fall 2013

Building Number	Building Name	Construction Year	Net Assignable Square Footage	Gross Square Footage
1	John W. Abercrombie Hall	1947	32,934	38,580
3	Fred Shuttlesworth Dining Hall	2007	27,300	39,000
4	John W. Beverly Hall	1939	16,511	24,483
5	Bibb Graves Hall	1928	32,934	38,580
6	William Hooper Council Hall	1956	41,371	62,872
9	Faculty Home – 1040	1939	2,135	2,580
10	Faculty Home – 1030	1936	1,458	1,820
11	Faculty Home – 1004	1956	1,237	1,620
14	George H. Lockhart Gymnasium	1939	31,913	48,956
19	Kilby Hall	1920	4,065	8,256
22	William Burns Paterson Hall	1930	26,494	46,886
23	Friendship Manor	1922	4,632	5,150
26	George W. Trenholm Hall	1947	19,671	33,818
32	Faculty Home – 1050	1936	1,926	2,580
33	Faculty Home – 1020	1956	1,829	2,961
34	Faculty Home – 1006	1956	1,540	1,716
35	Faculty Home – 1010	1947	1,285	1,598
55	Science Building	1968	42,388	57,352

Building Inventory, Fall 2013 (continued)

Building Number	Building Name	Construction Year	Net Assignable Square Footage	Gross Square Footage
56	Edward G. McGehee Hall	1968	27,778	41,715
57	Willease R. Simpson Hall	1966	27,952	42,476
58	Faculty Apts	1966	7,572	7,816
59	Faculty Apts	1966	4,773	4,956
60	George N. Card Hall	1963	32,704	35,577
62	President's Home	1970	4,799	5,184
63	Zelia Stephens Early Childhood Center	1971	9,832	14,145
64	Bessie W. Benson Hall	1972	32,964	41,205
66	Tullibody Hall (Music Building)	1974	23,219	41,000
68	Levi Watkins Learning Center	1978	74,690	107,166
69	Business Administration	1978	19,986	28,534
70	Peyton Finley Hall	1983	2,157	3,872
71	Peyton Finley Hall	1983	2,157	3,872
72	Peyton Finley Hall	1983	2,157	3,872
73	Peyton Finley Hall	1983	2,157	3,872
74	Willetta McGinty Apartments	1983	3,120	3,872
75	Willetta McGinty Apartments	1983	3,120	3,872
76	Willetta McGinty Apartments	1983	3,120	3,872
77	Willetta McGinty Apartments	1983	3,120	3,872
78	Tullibody Fine Arts Center	1984	25,782	52,176
79	Martin L. King, Jr. Hall	1990	36,481	64,513
80	Bessie S. Estell Hall	1990	36,481	64,513

Building Inventory, Fall 2013 (continued)

Building Number	Building Name	Construction Year	Net Assignable Square Footage	Gross Square Footage
81	ASU Dunn-Oliver Acadome	1992	111,438	220,512
82	Charles Johnson Dunn Tower	1994	67,994	114,419
83	Olean Black Underwood Tennis Center	1994	1,777	2,700
85	Campus Police ID	1939	809	809
86	Allied Health #1	1955	15,747	17,616
87	Allied Health #2	1955	5,974	8,368
88	Storage Building	1931	2,965	3,456
90	Physical Plant	1971	15,250	18,324
91	Bus Wash Rack	2000	2,574	2,700
92	Girard Apartment A	1969	5,998	6,664
93	Girard Apartment B	1969	3,978	4,420
94	Girard Apartment C	1969	5,211	5,780
95	Girard Apartment D	1969	3,366	3,740
96	Abernathy House	1930	1,683	1,870
97	Nat King Cole	1912	810	900
98	Civil Rights Center	1990	2,453	3,628
99	Football Facility	1996	9,182	11,520
100	John Buskey Health Center	2001	45,077	77,980
101	Kittell Hall	1962	7,105	10,442
102	German Hall	1935	2,165	2,496
103	Van Vorst Hall – North	1962	2,625	3,983
104	Van Vorst Hall	1924	6,737	10,107
105	Van Vorst Hall-South	1963	2,063	2,907
106	Dooley Hall	1930	5,944	9,410
107	Craft Shop	1958	452	499
108	Callie Lee Center	1976	2,867	3,000
109	Maintenance Garage	1970	1,033	1,148

Building Inventory, Fall 2013 (continued)

Building Number	Building Name	Construction Year	Net Assignable Square Footage	Gross Square Footage
110	Meeng's Hall	1975	9,508	12,800
111	Branche Hall	1960	9,051	13,121
112	Gymnasium	1968	12,847	16,903
113	South Duplex	1970	2,268	2,520
114	President's Home	1965	1,517	2,051
115	Chapel	1948	5,253	6,730
116	Day Care Center	1930	2,185	2,538
117	Pole Barn	1978	3,579	3,652
118	North Duplex	1993	2,223	2,470
119	Open Shed	1960	1,329	1,350
120	East Storage Building	1965	1,243	1,440
121	Alumni House	1955	2,290	2,750
122	Robert C. Hatch	2007	31,913	55,951
123	Groundkeeper Shop	1990	1,163	1,232
124	Dwight's	1990	1,178	3,800
125	Life Sciences	2008	47,989	85,000
126	Ralph D. Abernathy Hall	2009	124,419	140,623
127	Inventory Control	1978	3,154	3,270
128	ASU Commerce	1979	64,138	64,138
129	ASU Farmers Market	2011	36,062	36,062
130	Athletic Complex	1975	14,720	14,720
131	Dorm A	2011	59,416	78,740
132	Dorm B	2011	62,874	78,740

Building Inventory, Fall 2013 (continued)

Building Number	Building Name	Construction Year	Net Assignable Square Footage	Gross Square Footage
133	Public Safety	1972	5,006	5,006
134	Medical Place	1997	11,147	11,399
135	Baseball Complex	2012	1,661	1,917
136	Softball Complex	2012	1,444	1,629
137	P&O	1988	6,286	9,656
138	ASU Stadium	2012	344,072	378,479
139	John Garrick Hardy Student Center	2012	64,933	76,800
Total			1,980,773	2,643,064

Space Data, Fall 2008-13

Space Data Report	Educational and General Gross Square Footage	Total Gross Square Footage
2008	1,058,258	1,736,935
2009	1,130,526	1,767,338
2010	1,017,929	1,728,713
2011	1,374,124	2,399,870
2012	1,388,773	2,680,366
2013	1,432,342	2,643,064

Note: Space in service as of June 30, 2012.

Financial Information

Source of Revenue, Fiscal Year 2012-13

Revenue Source	Reported values	Percent of total core revenues
Student tuition and fees	\$43,528,006	33%
Government appropriations	\$42,658,142	32%
Government grants and contracts	\$34,986,101	26%
Private gifts, grants, and contracts	\$2,796,688	2%
Investment income	\$1,759,191	1%
Other core revenues	\$7,051,053	5%
Total Core revenues	\$132,779,181	100%
Total revenues	\$145,664,980	

* IPEDS Finance Survey 2013-14

Expenditures by Function, Fiscal Year 2012-13

Expense function	Reported Values	Percent of Total Expenses
Instruction	\$41,184,390	29%
Research	\$2,052,331	1%
Public service	\$9,783,559	7%
Academic support	\$9,209,235	6%
Student services	\$17,102,006	12%
Institutional support	\$41,342,707	29%
Other core expenses	\$21,036,092	15%
Total core expenses	\$141,710,320	100%
Total expenses	\$152,499,908	
Auxiliary enterprises:		
Residential Life	\$6,361,348	4%
Other auxiliary expenses	\$553,405	0%
Total operating expenses	\$143,150,674	100%

* IPEDS Finance Survey 2013-14



Alabama State University Tuition and Fees as Compared to State Median, 2008-13

YEAR	Undergraduate				Graduate			
	Resident		Non - Resident		Resident		Non - Resident	
	ASU	STATE MEDIAN	ASU	STATE MEDIAN	ASU	STATE MEDIAN	ASU	STATE MEDIAN
2008-09	\$5,460	\$5,594	\$10,068	\$11,150	\$6,180	\$5,768	\$11,508	\$11,508
2009-10	\$6,468	\$6,185	\$12,084	\$12,282	\$7,524	\$6,334	\$14,196	\$13,152
2010-11	\$7,164	\$7,136	\$13,476	\$13,700	\$8,340	\$7,198	\$15,828	\$15,828
2011-12	\$8,082	\$7,865	\$14,394	\$15,170	\$9,108	\$8,016	\$16,596	\$17,186
2012-13	\$7,932	\$8,275	\$14,244	\$15,950	\$9,108	\$8,430	\$16,596	\$17,184
2013-14	\$8,720	\$8,770	\$15,656	\$17,135		\$8,976	\$18,248	\$18,248
% Change over 2012-13	9.9	6.0	9.9	7.4	10.0	6.5	10.0	6.2

Source: ACHE Undergraduate/Graduate Resident and Non-resident Tuition Plus Required Fees Combined , public Four-Year institutions 2001-02 thru 2012-13



Glossary

Academic Rank	Categorization of faculty positions, which include tenure/tenure-track and non-tenure-track positions. Tenured and tenure-track positions are assistant professor, associate professor and professor; non-tenure-track positions are instructor.
ACT	Previously known as the American College Testing program, this test measures educational development and readiness to pursue college-level coursework in English, mathematics, natural science and social studies. Student performance does not reflect innate ability and is influenced by a student's educational preparedness.
Admitted Student	Applicant who is offered admission to a degree-granting program at Alabama State University.
American Indian or Alaska Native	A person having origins in any of the original peoples of North and South America (including Central America) who maintains cultural identification through tribal affiliation or community recognition.
Applicant	An individual who has fulfilled the institution's requirements to be considered for admission and who has been notified of one of the following actions: admission, non admission, placement on waiting list or application withdrawn.
Asian Or Pacific Islander	A person having origins in any of the original peoples of the Far East, Southeast Asia, the Indian Subcontinent, or Pacific Islands. This includes people from China, Japan, Korea, the Philippine Islands, American Samoa, India and Vietnam.
Bachelor's Degree	A degree award (baccalaureate or equivalent degree, as determined by the Secretary of the U.S. Department of Education) that normally requires at least four years, but not more than five years, of full-time equivalent college-level work.
Black or African-American	A person having origins in any of the black racial groups of Africa.
Buildings	Capital assets built or acquired for occupancy and use by the entity. These are structures such as classrooms, research facilities, administrative offices and storage.
Classification	Degree-seeking students are classified based on satisfactory performance on all required examinations and successful completion of credit hours as follows: freshman (less than 32 semester hours), sophomore (at least 32 but less than 63 semester hours), junior (at least 63 but less than 93 semester hours) and senior (at least 93 semester hours).
Classification of Instructional Programs (CIP)	A standard numerical and terminological classification system for secondary and postsecondary instructional programs. CIP codes, a six-digit code (in the form xx.xxxx), are used by universities nationally to report various instructional program data to the U. S. Department of Education and other government and higher education organizations.
Clerical and Secretarial	A primary function or occupational activity category used to classify persons whose assignments typically are associated with clerical activities or are specifically of a secretarial nature.
Cohort	A specific group of students established for tracking purposes.

Degree	An award conferred by a college, university or other postsecondary education institution as official recognition for the successful completion of a program of studies.
Doctoral Degree	Highest degree award a student can earn for graduate study. The doctoral degree classification includes such degrees as Doctor of Education, Doctor of Juridical Science, Doctor of Public Health and the Doctor of Philosophy degree in any field such as agronomy, food technology, education, engineering, public administration, ophthalmology, or radiology.
Enrollment	The number of persons who have accurately completed the registration process and who have paid the appropriate fees for coursework.
Executive, Administrative and Managerial	Persons whose assignments require management of the institution, or a customarily recognized department or subdivision thereof. Assignments require the performance of work directly related to management policies or general business operations of the institution, department or subdivision. Assignments in this category customarily and regularly require the incumbent to exercise discretion and independent judgment.
Faculty	Persons whose initial assignments are made for the purpose of conducting instruction, research or public service as a principal activity (or activities). They may hold academic rank titles of professor, associate professor, assistant professor, instructor, lecturer or the equivalent of any of those academic ranks. Faculty may also include the chancellor/ president, provost, vice provosts, deans, directors or the equivalent, as well as associate deans, assistant deans and executive officers of academic departments (chairpersons, heads or the equivalent) if their principal activity is instruction combined with research and/or public service. The designation as “faculty” is separate from the activities to which they may be currently assigned. For example, a newly appointed president of an institution may also be appointed as a faculty member. Graduate, instruction and research assistants are not included in this category.
Federal Government Grants and Contracts (Revenues)	Revenues from federal governmental agencies that are for training programs, research or public service activities for which expenditures are reimbursable under the terms of a government grant or contract. (Includes Pell Grants.)
First-Time Freshman	A student attending any institution for the first time at the undergraduate level. Includes students enrolled in the fall term who attended college for the first time in the prior summer term.
Freshman	Classification level designation for first-year student in undergraduate programs.
Full-Time Equivalent (F.T.E.) Student	The full-time equivalent (FTE) of students is a single value providing a meaningful combination of full time and part time students.
Full-Time Student	Undergraduate: a student enrolled for 12 or more semester credit hours. Graduate: a student enrolled for 9 or more semester credit hours.
Graduate Student	A student who holds a bachelor’s or equivalent and is taking courses at the post-baccalaureate level.



Glossary (continued)

Graduation Rate	Represents the percent of first-time, full-time freshmen enrolled in the University in the fall terms of an academic year that subsequently earn a degree at the University within four, six or eight years.
Grants and Contracts (Revenues)	Revenues from governmental agencies and nongovernmental parties that are for specific research projects, other types of programs or for general institutional operations (if not government appropriations).
Hispanic	A person of Mexican, Puerto Rican, Cuban, Central or South American, or other Spanish culture or origin, regardless of race.
Junior	Classification-level designation for third-year student in undergraduate programs.
In-State Student	A student who is a legal resident of the state in which he/she attends school.
In-State Tuition	The tuition charged by institutions to those students who meet the state's or institution's residency requirements.
Level (of Student)	Student's level of progress toward a degree. Freshmen and sophomore students are categorized as lower level; junior and senior students are categorized as upper level; graduate students are categorized as graduate level.
Master's Degree	An award that requires the successful completion of a program of study of generally one or two full-time equivalent academic years of work beyond the bachelor's degree.
Native Hawaiian or Other Pacific Islander	A person having origins in any of the original peoples of Hawaii, Guam, Samoa or other Pacific Islands.
New Graduate	Student who has not previously enrolled for work creditable toward an advanced degree at any university and who is enrolled for work creditable toward such a degree.
Non-Degree-Seeking Student	A student enrolled in courses for credit who is not recognized by the institution as seeking a degree or formal award.
Nonresident Alien	A person who is not a citizen or national of the United States and who is in this country on a visa or temporary basis and does not have the right to remain indefinitely.
Non Instructional Employee	All University employees who are not classified as faculty.
University Housing	Any residence halls owned or controlled by an institution within the same reasonably contiguous geographic area and used by the institution in direct support of, or in a manner related to, the institution's educational purposes.
Out-of-State Student	A student who is not a legal resident of the state in which he/she attends school.
Out-of-State Tuition	The tuition charged by institutions to those students who do not meet the institution's or state's residency requirements.

Part-Time Staff (Employees)	The type of appointment at the snapshot date determines whether an employee is full time or part time. The employee's term of contract is not considered in making the determination of full or part time.
Part-Time Student	Undergraduate
Ethnicity	Category used to describe groups to which individuals belong, identify with, or belong in the eyes of the community. The categories do not denote scientific definitions of anthropological origins. A person may be counted in only one group.
Retention Rate	A measure of the rate at which students persist in their educational program at an institution, expressed as a percentage. For four-year institutions, this is the percentage of first-time bachelors (or equivalent) degree-seeking undergraduates from the previous fall who are again enrolled in the current fall.
Revenues	The inflow of resources or other enhancement of net assets (or fund balances) of an institution or settlements of its liabilities (or a combination of both) from delivering or producing goods, rendering services, or other activities that constitute the institution's ongoing major or central operations. Includes revenues from fees and charges, appropriations, auxiliary enterprises and contributions and other nonexchange transactions.
SAT	Previously known as the Scholastic Aptitude Test, this is an examination administered by the Educational Testing Service (ETS) which is used to predict the facility with which an individual will progress in learning college-level academic subjects.
Senior	Classification level designation for fourth-year or later student in undergraduate programs.
Service/Maintenance	Primary function or occupational activity category used to classify persons whose assignments require limited degrees of previously acquired skills and knowledge and in which workers perform duties that result in or contribute to the comfort, convenience and hygiene of personnel and the student body or that contribute to the upkeep of the institutional property.
Skilled Crafts	Primary function or occupational activity category used to classify persons whose assignments typically require special manual skills and a thorough and comprehensive knowledge of the processes involved in the work, acquired through on-the-job training and experience or through apprenticeship or other formal training programs.
Sophomore	Classification level designation for second-year student in undergraduate programs.
State Of Origin	The state of residence at the time of application to the University.

Glossary (continued)

Technical And Paraprofessional	Primary function or occupational activity category used to classify persons whose assignments require specialized knowledge or skills which may be acquired through experience, apprenticeship, on-the-job-training, or academic work in occupationally specific programs that result in a 2-year degree or other certificate or diploma. Includes persons who perform some of the duties of a professional in a supportive role, which usually requires less formal training and/or experience than normally required for professional status.
Tenure	Status of a personnel position with respect to permanence of the position.
Tenure Track	Personnel positions that lead to consideration for tenure.
Transfer Applicant	An individual who has fulfilled the institution's requirements to be considered for admission (including payment or waiving of the application fee, if any) and who has previously attended another college or university and earned college-level credit.
Transfer Student	A student entering the institution for the first time but known to have previously attended a postsecondary institution at the same level (e.g., undergraduate).
Tuition	Amount of money charged to students for instructional services. Tuition may be charged per term, per course or per credit.
Tuition And Fees (Revenues)	Revenues from all tuition and fees assessed against students (net of refunds and discounts and allowances) for educational purposes.
Undergraduate	A student enrolled in a four- or five-year bachelor's degree program, an associate degree program, or a vocational or technical program below the baccalaureate.
Unduplicated Head Count	The sum of students enrolled for credit with each student counted only once during the reporting period, regardless of when the student enrolled.
White, Non-Hispanic	A person having origins in any of the original peoples of Europe, North Africa, or the Middle East (except those of Hispanic origin).

Source: Unless otherwise noted, the source of these definitions is the IPEDS glossary: <http://nces.ed.gov/ipeds/>



2013 Alumni Information

2012 EXECUTIVE OFFICERS	
President	Beatrice “Bea” Forniss
Vice President	Vanessa Dickens
Secretary	William Vann, III
Secretary/Treasurer	Marlon Meeks
REGIONAL DIRECTORS	
Shannon Lawrence	Farwest
Joycelyn Travis	Midwest
Rita Knight	Northeast
La Tanya Dunham	Southeast
MEMBERS-AT-LARGE	
Aquilla Scott	Farwest
Abraham T. Smith	Midwest
James S. McFadden	Northeast
Daisy Baxter-Glass	Southeast

Alumni Relations Director

Cromwell Handy
 P.O. Box 271
 Montgomery, AL 36101-0271
 chandy@alasu.edu
 334-229-4280

NAA President

Bea Forniss
 ASU National Alumni Association
 P.O. Box 6078
 Montgomery, AL 36106
 naapresident@alasu.edu
 Home 334-288-8945
 Office 334-242-5464



ASU

**ALABAMA STATE
UNIVERSITY**

Office of Institutional Research

www.alasu.edu

P.O. Box 271 • Montgomery, AL 36101

334-229-4100