

ASU

**ALABAMA STATE
UNIVERSITY**

Institutional Information

Fall 2020



Preface

The Office of Institutional Research (OIR) publishes the University Factbook annually. In 2019, the Factbook shifted from a static document to an online interactive Factbook. This Institutional Information document contains information supplemental to the interactive Factbook, containing pertinent information about the University's history, administration, academic programs, alumni, facilities, and housing. The interactive Factbook and Institutional Information provide a historical perspective in which to review the University's development and for use as a reference among the University's administrators and faculty in planning and decision-making.

The information presented in this Institutional Information supplement reflects the official University figures for Fall 2020. Additional information may be obtained by visiting the Office of Institutional Research website at www.alasu.edu/OIR, emailing OIR@alasu.edu, or calling (334) 229-6859.



Office of Institutional Research

Alabama State University

915 S. Jackson Street
McGehee Hall-Room 205
Montgomery, Alabama 36104
Phone: (334) 229-6859
Fax: (334) 229-6856
www.alasu.edu

Table of Contents

GENERAL INFORMATION	4
<i>About Alabama State</i>	4
<i>Mission, Vision, and Institutional Goals</i>	6
<i>Accreditation</i>	7
<i>Board of Trustees</i>	8
<i>University Presidents</i>	9
<i>President’s Cabinet</i>	10
<i>College Deans, Academic Affairs</i>	11
<i>Organizational Chart</i>	12
ALUMNI INFORMATION.....	13
ACADEMIC DEGREE PROGRAM INVENTORY.....	14
FACILITIES.....	18
UNIVERSITY HOUSING.....	22

GENERAL INFORMATION

About Alabama State

Legacy

The Alabama State University (ASU) was founded in 1867, in Marion, Ala., as a school for African- Americans. The school started as the Lincoln Normal School by nine freed slaves now known as the Marion Nine. The Marion Nine are Joey P. Pinch, Thomas Speed, Nicholas Dale, James Childs, Thomas Lee, John Freeman, Nathan Levert, David Harris, and Alexander H. Curtis. The co-founders and original trustees, with assistance from Marion community members, raised \$500 for land, and on July 18, 1867, filed incorporation papers to establish the Lincoln Normal School at Marion and opened its doors that November to 113 students.

Our 150-year + history is a legacy of perseverance, progress and promise. We're proud of our legacy, and we welcome students to dream, to share their unique gifts and talents, and to take pride in knowing they are part of a rich tradition. In 1873, this predecessor of Alabama State University became the nation's first state-sponsored Liberal Arts institution for the higher education of blacks beginning ASU's rich history as a "Teacher's College".

Today

Alabama State University (ASU), is a widely respected, world-class institution of higher learning which welcomes students from all backgrounds. We offer over 60 undergraduate and graduate degree programs, from our historic teacher education program to our new, high-demand programs in health sciences and microbiology.

The students who attend ASU are as diverse as our academic offerings, with students from more than 40 states and various countries seeking a top-notch education that extends far beyond the walls of a classroom. With a 15 to 1 student-faculty ratio, students receive the personal attention, mentoring, encouragement, and knowledge needed to achieve their dreams.

Location

Alabama State University (ASU) is located in historic Montgomery, Ala., the birthplace of the modern civil rights movement. ASU offers students the unique opportunity to live, learn and grow in a city rich with culture and history. In fact, some of the most notable figures of the civil rights era – including the Rev. Ralph David Abernathy, attorney Fred Gray and the Rev. Fred Shuttlesworth are counted among ASU’s many distinguished alumni.

The beautiful 172-acre campus features lush landscaping, historic landmarks, and both modern and traditional facilities that pay homage to the University’s proud past and bright future.

The ASU campus is located only a short walk from the state capital, the state government complex and downtown Montgomery, making the downtown business and entertainment district, art galleries, state archives, museums and historical sites readily accessible to students.



Mission, Vision, and Institutional Goals

Mission

Alabama State University (ASU) is a comprehensive diverse student- centered public HBCU committed to global excellence in teaching, research and service. The University fulfills its mission by:

- Fostering critical thought
- Encouraging artistic creativity
- Developing professional competence
- Promoting responsible citizenship in its students
- Adding to the academic and experiential bodies of knowledge
- Enhancing the quality of life through research and discovery

Cultivating global citizenship through thoughtful (meaningful, purposeful conscientious, intentional) and engaging public service. ASU offers baccalaureate through doctorate degrees in an expansive array of academic programs. We maintain a scholarly and creative faculty with state-of-the-art facilities.

Vision

Alabama State University (ASU) will achieve global recognition through excellence in teaching, research and service. ASU will advance its current status as a premiere, comprehensive, Level VI regionally accredited institution, to a Doctoral/Research University (DRU) Carnegie Classification–designated institution. We shall become the destination university for students seeking a holistic educational experience. We will build upon quality scholarship and academic rigor to graduate a diverse corps of lifelong learners who are fully equipped to lead and succeed as citizens of the global workforce.

Institutional Goals

- To organize the University in such a manner as to provide sufficient and appropriate leadership, management and oversight to achieve its mission and goals;
- To ensure the academic integrity of the University;
- To ensure the fiscal integrity of the University;
- To enhance the public’s perception of the University in order to increase external support;
- To develop and maintain the physical campus so that the University is a productive, pleasant place to work, study and live;
- To ensure that the University responds to all of its constituents;
- To improve programs and services that will contribute to the development of wholesome student life; and
- To foster continuous improvement of daily operations to become a world-class institution of higher learning.

Accreditation

Institutional Accreditation

Alabama State University (ASU) is accredited to award bachelor's, master's, education specialist and doctoral degrees by the Southern Association of Colleges and Schools Commission on Colleges (SACSCOC). Contact the Commission on Colleges at 1866 Southern Lane, Decatur, Georgia 30033- 4097 or call 404-679-4500 for questions about the accreditation of Alabama State University.

Program Accreditations

The University Departmental Programs are accredited by the following organizations and associations:

Accreditation	Acronym
The Association of Collegiate Schools and Programs	ACBSP
Accreditation Council for Occupational Therapy Education	ACOTE
Commission on Accreditation for Health Informatics and Information Management Education	CAHIIM
Commission on Accreditation in Physical Therapy Education	CAPTE
Council for Accreditation of Counseling and Related Educational Programs	CACREP
Council on Rehabilitation Education, Inc.	CORE
Council on Social Work Education	CSWE
National Association of Schools of Art and Design	NASAD
National Association of Schools of Music	NASM
National Association of Schools of Theatre	NAST
National Association of State Directors of Teacher Education and Certification	NASDTEC
Council for Accreditation of Teacher Education	CAEP

Alabama State University (ASU) is approved by the Alabama State Department of Education and its programs and credits are accepted for teacher certification.

In addition, ASU is approved by the Veterans Administration to provide educational programs authorized by Congress under several federal acts and those authorized by the state of Alabama under the Alabama G.I. and Dependents Benefit Act.

Board of Trustees

Alabama State University is under the management, control, and maintenance of a Board of Trustees. The Board of Trustees consists of the Governor of Alabama, four members from the state-at-large, and one member from each of the seven congressional districts in the state, with two named from the congressional district in which the University is located. The trustees are appointed to staggered terms by the governor, with the advice and consent of the state senate.

By statute, the Board of Trustees meets in February, May, and September. It may also meet at other times on call of the board president. When not in session, its business is transacted by the executive committee of the Board of Trustees. The officers of the Board of Trustees are the President, President Pro Tempore, and the secretary, who is the President of the University.

The Alabama State University Board of Trustees has legal authority, control, and responsibility for governance of the university in the areas of institutional mission, fiscal stability, institutional policy, and related foundations and corporate entities that support the institution and its programs.

Fall 2020 Board of Trustees

Name	Term Expiration	Profession	District
Governor Kay Ivey	Term in Office	Politics	Ex-Officio
Dr. Quinton T. Ross, Jr.	Term in Office	Education	Ex-Officio
Delbert Madison	2026	Banking	State-At-Large
Angela McKenzie	2026	Banking	State-At-Large Third
Robert Barnett	2023	Medicine	Nation-At-Large
Napoleon Bracy, Jr	2023	Politics	First
George Gore	2023	Consulting	Fifth
LaRaunce Fleming	2026	Consulting	Second
Eddie Hardaway	2023	Law	Seventh
Darrell L. Hudson, President	2026	Education	State-At-Large
Brenda B. Hunter, President Pro Tempore	2022	Consulting	Nation-At-Large
Tiffany B. McCord	2022	Law	Second
Larry Means	2023	Politics	Fourth
Mario Lumzy	2023	Education	Sixth
Pamela J. Ware	2023	Government Affairs	State-At-Large
Joe Whitt Sr.	2026	Retired	Third

University Presidents

The tables below lists all Alabama State University presidents since the University's founding.

Years	Name
2017–Present	Dr. Quinton T. Ross, Jr. **
2016–2017	Dr. Leon C. Wilson – Interim (December-September)
2014–2016	Dr. Gwendolyn E. Boyd **
2013–2014	Dr. William Hamilton Harris - Interim (January-January)
2012-2012	Dr. Joseph H. Silver, Sr.
2008–2012	Dr. William Hamilton Harris
2001–2008	Dr. Joe A. Lee
2000–2001	Dr. Roosevelt Steptoe - Interim (October-September)
1994–2000	Dr. William Hamilton Harris
1991–1994	Dr. Clifford C. Baker **
1984-1991	Dr. Leon Howard
1983–1984	Dr. Leon Howard - Interim (November-August)
1981–1983	Dr. Robert L. Randolph
1962–1981	Dr. Levi Watkins Sr.
1962-1962	Robert C. Hatch – Interim (January-September)
1925–1962	Harper Councill Trenholm
1920–1925	George Washington Trenholm
1915–1920	William Beverly
1878-1915	William Burns Paterson
1874-1878	George N. Card

** Indicates ASU Alumnus

President's Cabinet

The Alabama State University Administrative Council, which is also called the President's Cabinet, advises the university president and provides leadership with regard to university policies, practices, and initiatives.

Fall 2020 President's Cabinet

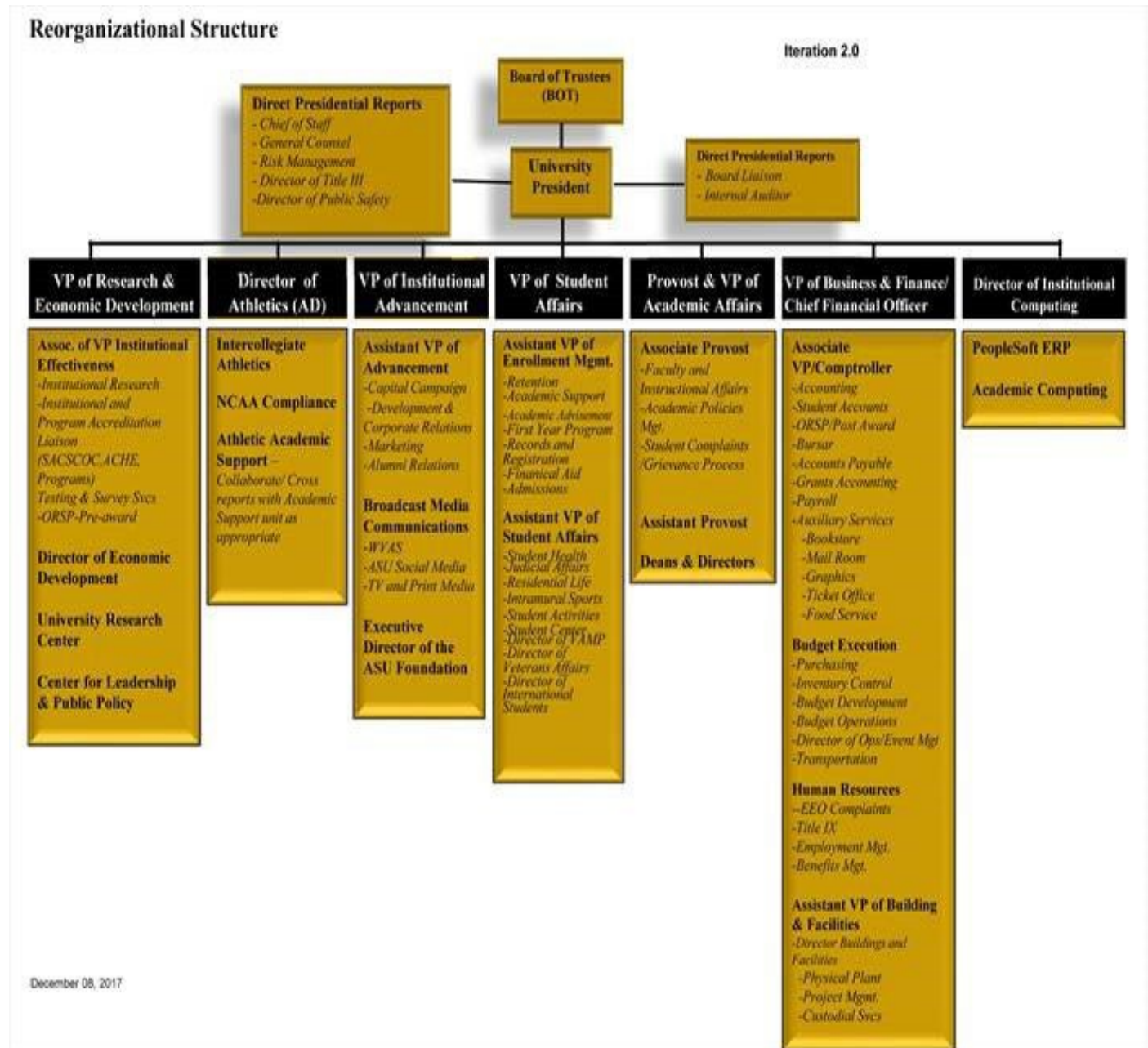
Name	Title
Dr. Quinton T. Ross, Jr.	President
Dr. Kevin Rolle	Chief of Staff, Acting Vice President for Student Affairs and Enrollment Management
Dr. Carl Pettis	Provost and Vice President of Academic Affairs
Dr. Tanjula Petty	Assistant Provost of Academic Affairs
Mr. Larry Cobb, Sr.	Interim Vice President, Office of Technology Services
Mr. William F. Hopper	Vice President, Business and Finance
Mrs. Lois G. Russell	Vice President, Institutional Advancement
Mr. Donald Dotson	Vice President, Facilities Management & Operations
Dr. Christine Thomas	Associate Vice President, Institutional Effectiveness
Mr. Kenneth Thomas, Esq.	University Counsel
Ms. Jennifer Lynne Williams	Athletic Director
Mr. Kelvin Kendrick	Deputy Director of Public Safety

Fall 2020 Deans of Academic Colleges

Name	Title, College
Dr. Kathaleen Amende	Interim Dean, College of Liberal Arts and Social Science
Dr. Kamal Hingorani	Dean, College of Business Administration
Dr. Alethea Hampton	Dean, College of Education
Dr. Charlene Portee	Dean, College of Health Sciences
Dr. Kennedy Wekesa	Dean, College of Science, Technology Engineering & Mathematics
Dr. Caterina Bristol	Interim Dean, College of Visual & Performing Arts
Dr. Evelyn A. Hodge	Dean, University College
Dr. Edward Brown	Dean, The Harold Lloyd Murphy Graduate School
Dr. Janice Franklin	Dean, Levi Watkins Learning Center

Organizational Chart

Alabama State University Organizational Chart



ALUMNI INFORMATION



2020-2021 Executive Officers

President	Erick Wright
Vice President	Shannon Cloman
Secretary	Yolanda Sayles Robinson
Secretary/Treasurer	Tamara Lovejoy

<u>Alumni Relations Director</u>
Cromwell Handy
PO Box 6124
Montgomery, AL 36106
(334) 229-4280 (513) 763-0997
chandy@alasu.edu

The mission of the Office of Alumni Relations at Alabama State University is to foster and strengthen the relationship between Alabama State University (ASU) and the National Alumni Association (NAA) of ASU, alumni, supporters and friends; to promote and preserve the University's vision, traditions, purposes, alumni growth; and to maintain records of all alumni and former students while keeping alumni and former students apprised of the latest ASU news, events and programs.

The Office of Alumni Relations maintains communications with more than **28,000 alumni**, including those who are members of the NAA. Currently, the NAA has **35 chapters** nationwide.

ACADEMIC DEGREE PROGRAM INVENTORY

CIP	Field Of Study	Program Title	Degrees Offered
College of Liberal Arts & Social Sciences			
09.0101	Speech Communication and Rhetoric	Communications	B.A.
23.0101	English Language And Literature, General	English	B.A.
43.0104	Criminal Justice	Criminal Justice Studies	B.S.
44.0701	Social Work	Social Work	B.S.W.
44.0701	Social Work	Social Work	M.S.W.
42.0101	Psychology, General	Psychology	B.S.
45.1001	Political Science	Political Science And Government	B.A.
54.0101	History, General	History	B.A.
54.0101	History, General	History	M.A.
College of Business Administration			
11.0401	Information Science/Studies	Computer Information Systems	B.S.
52.0201	Business Administration And Management, General	Business Management	B.S.
52.0301	Accounting	Accounting	B.S.
52.0801	Finance, General	Finance	B.S.
52.1401	Marketing/Marketing Management, General	Marketing	B.S.
52.0301	Accounting	Accountancy	M.Acc.

CIP	Field Of Study	Program Title	Degrees Offered
College of Education			
13.1001	Special Education And Teaching, General	Special Education	B.S.
13.1202	Elementary Education and Teaching	Elementary Education	B.S.
13.1205	Secondary Education and Teaching	Secondary Education	B.S.
13.1210	Early Childhood Education and Teaching	Pre-Elementary Education	B.S.
13.1312	Music Teacher Education	Music Education	B.M.Ed.
13.1314	Physical Education Teaching And Coaching	Physical Education	B.S.
31.0301	Parks, Recreation and Leisure Facilities Management, General	Recreational Therapy	B.S.
13.0401	Educational Leadership and Administration, General	Institutional Leadership	M.Ed.
13.0501	Educational/Instructional Technology	Library Educational Media	M.Ed.
13.1001	Special Education And Teaching, General	Special Education	M.Ed.
13.1101	Counselor Education/ School Counseling And Guidance Services	Guidance Counseling	M.Ed.
13.1205	Secondary Education and Teaching	Secondary Education	M.Ed.
13.1210	Early Childhood Education and Teaching	Early Childhood Ed	M.Ed.
13.1206	Teacher Education, Multiple Levels	P-12 Education	M.Ed.
11.1099	Computer/Information Technology Services Administration and Management Applied Technology	Applied Technology	M.S.
44.9999	Public Administration and Social Service Professions, Other	Agency Counseling	M.S.

CIP	Field Of Study	Program Title	Degrees Offered
College of Education (Cont.)			
13.0401	Educational Leadership and Administration, General	Educational Leadership, Policy, and Law	Ed.D.
13.0401	Educational Leadership and Administration, General	Educational Leadership, Policy, and Law	Ph.D.
13.0101	Education, General	Education	Ed.S.
13.1101	Counselor Education/ School Counseling And Guidance Services	Counseling	Ed.S.
13.0401	Instructional Leadership	Instructional Leadership	Ed.S.
13.0401	Teacher Leadership	Teacher Leadership	Ed.S.
13.0501	Library Educational Media	Library Educational Media	Ed.S.
College of Health Sciences			
51.0706	Health Information/Medical Records Administration/	Health Information Management	B.S.
51.2399	Rehabilitation And Therapeutic Professions, Other	Rehabilitation Services	B.S.
51.2310	Vocational Rehabilitation Counseling/Counselor	Rehabilitation Counseling	M.R.C.
51.2307	Orthotics/Prosthetics	Prosthetics and Orthotics	M.S.
51.2306	Occupational Therapy/Therapist	Occupational Therapy	M.S.O.T
51.2308	Physical Therapy/Therapist	Physical Therapy	D.P.T.
College of Science, Technology, Engineering & Mathematics			
11.0701	Computer Science	Computer Science	B.S.
26.0101	Biology/Biological Sciences, General	Biology	B.S.
26.0101	Biology/Biological Sciences, General	Biology	M.S.
43.0111	Criminalistics and Criminal Science	Forensic Biology	B.S.
26.0502	Microbiology, General	Microbiology	Ph.D.
26.1302	Marine Biology And Biological Oceanography	Marine Biology	B.S.
27.0101	Mathematics, General	Mathematics	B.S.

CIP	Field Of Study	Program Title	Degrees Offered
College of Science, Technology, Engineering & Mathematics (Cont.)			
27.0101	Mathematics, General	Mathematics	M.S.
40.0501	Chemistry, General	Chemistry	B.S.
40.051	Forensic Chemistry	Forensic Chemistry	B.S.
40.0801	Physics, General	Physics	B.S.
43.0106	Forensic Science And Technology	Forensic Science	M.S.
14.0501	Bioengineering and Biomedical Engineering	Biomedical engineering	B.S.
College of Visual & Performing Arts			
50.0301	Dance, General	Dance	B.F.A.
50.0501	Drama And Dramatics/Theatre Arts, General	Theatre Arts	B.A.
50.0701	Art/Art Studies, General	Art	B.A.
50.0901	Music, General	Music	B.A.
University College			
30.9999	Multi-/Interdisciplinary Studies, Other	Interdisciplinary Studies	B.S./B.A.

Total Number of Degree Programs

Baccalaureate	35
Masters	18
Education Specialist	6
Doctoral	4
Total	63

FACILITIES

Building Inventory, Fall 2020

Building Number	Building Name	Construction Year	Net Assignable Square Footage	Gross Square Footage
1	John W. Abercrombie Hall	1947	32,934	38,580
3	Fred Shuttlesworth Dining Hall	2007	27,300	39,000
4	John W. Beverly Hall	1939	16,511	24,483
5	Bibb Graves Hall	1928	32,934	38,580
6	William Hooper Councill Hall	1956	41,371	62,872
8	University Center Annex	1975	2,064	3,952
9	Faculty Home – 1040	1939	2,135	2,580
10	Faculty Home – 1030	1936	1,458	1,820
11	Faculty Home – 1004	1956	1,237	1,620
14	George H. Lockhart Gymnasium	1939	31,913	48,956
19	Kilby Hall	1920	4,065	8,256
20	Maintenance Shop	1939	5,431	5,431
22	William Burns Paterson Hall	1930	26,494	46,886
23	Fountain Manor	1922	4,632	5,150
26	George W. Trenholm Hall	1947	19,671	33,818
32	Faculty Home – 1050	1936	1,926	2,580
33	Faculty Home – 1020	1956	1,829	2,961
34	Faculty Home – 1006	1956	1,540	1,716
35	Faculty Home – 1010	1947	1,285	1,598
55	H. Councill Trenholm Hall	1968	42,388	57,352
56	Edward G. McGehee Hall	1968	27,778	41,715
57	Willease R. Simpson Hall	1966	27,952	42,476
58	Cynthia D. Alexander Apartments	1966	7,572	7,816
59	Cynthia D. Alexander Apartments	1966	4,773	4,956
60	George N. Card Hall	1963	32,704	35,577
61	William H. Benson Hall	1970	41,946	67,001

Building Number	Building Name	Construction Year	Net Assignable Square Footage	Gross Square Footage
62	University House	1970	4,799	5,184
63	Zelia Stephens Early Childhood Center	1971	9,832	14,145
64	Bessie W. Benson Hall	1972	32,964	41,205
66	Tullibody Hall	1974	23,219	41,000
68	Levi Watkins Learning Center	1978	74,690	107,166
69	Business Administration	1978	19,986	28,534
70	Peyton Finley	1983	2,157	3,872
74	Willetta McGinty Apartments	1983	3,120	3,872
78	Tullibody Fine Arts Center	1984	25,782	52,176
79	Martin L. King, Jr. Hall	1990	36,481	64,513
80	Bessie S. Estell Hall	1990	36,481	64,513
81	ASU Acadome	1992	111,438	220,512
82	Charles Johnson Dunn Tower	1994	67,994	114,419
83	Olean Black Underwood Tennis Center	1994	1,777	2,700
85	Campus Police ID	1939	809	809
86	Allied Health #1	1955	15,747	17,616
87	Allied Health #2	1955	5,974	8,368
88	Storage Building	1931	2,965	3,456
90	Physical Plant	1971	15,250	18,324
91	Bus Wash Rack	2000	2,574	2,700
92	Girard Apartment A	1969	5,998	6,664
93	Girard Apartment B	1969	3,978	4,420
94	Girard Apartment C	1969	5,211	5,780
95	Girard Apartment D	1969	3,366	3,740

Building Number	Building Name	Construction Year	Net Assignable Square Footage	Gross Square Footage
96	Norris House	1930	1,683	1,870
97	Nat King Cole	1912	810	900
98	Civil Rights Center	1990	2,453	3,628
99	Football Facility	1996	9,182	11,520
100	John Buskey Health Center	2001	45,077	77,980
101	Kittell Hall	1962	7,105	10,442
102	German Hall	1935	2,165	2,496
103	Van Vorst Hall – North	1962	2,625	3,983
104	Van Vorst Hall	1924	6,737	10,107
105	Van Vorst Hall-South	1963	2,063	2,907
106	Dolley Hall	1930	5,944	9,410
107	Craft Shop	1958	452	499
108	Callie Lee Center	1976	2,867	3,000
109	Maintenance Garage	1970	1,033	1,148
110	Meeng's Hall	1975	9,508	12,800
111	Branche Hall	1960	9,051	13,121
112	Gymnasium	1968	12,847	16,903
113	South Duplex	1970	2,268	2,520
114	President's Home	1965	1,517	2,051
115	Chapel	1948	5,253	6,730
116	Day Care Center	1930	2,185	2,538

Building Number	Building Name	Construction Year	Net Assignable Square Footage	Gross Square Footage
117	Pole Barn	1978	3,579	3,652
118	North Duplex	1993	2,223	2,470
119	Open Shed	1960	1,329	1,350
120	East Storage Building	1965	1,243	1,440
121	Alumni Relations	1955	2,290	2,750
122	Robert C. Hatch	2007	35,125	55,951
123	Grounds Shop	1990	1,163	1,360
124	Dwight's	1990	1,178	3,800
125	Life Sciences Building	2008	60,000	85,000
126	Ralph D. Abernathy	2009	124,419	140,623
127	Inventory Control	1978	3,154	3,270
128	ASU 32 Commerce	1979	55,457	64,605
129	Football Complex	2011	28,770	36,062
130	ASU Farmers Market	1975	14,195	14,720
131	Dorm A	2011	59,416	78,740
132	Dorm B	2011	62,874	78,740
133	Public Safety	1972	4,675	5,006
134	Medical Place	1997	11,147	11,399
135	Baseball Complex	2012	1,661	1,917
136	Softball Complex	2012	1,444	1,629
137	P&O	1988	6,286	9,656
138	ASU Stadium	2012	378,479	344,072
139	Hardy Student Center	2012	64,933	76,800
Total			1,980,773	2,695,240

UNIVERSITY HOUSING

Housing Occupancy, Fall 2020

University Housing and Resident Gender	Capacity	Students	Occupancy Rate
Abercrombie Hall (Male)	126	121	96%
Bibb Graves Hall (Female)	129	118	91%
Simpson Hall (Female)	104	99	95%
Bessie Benson Hall (Female)	140	139	99%
George N. Card Hall (Male)	118	117	99%
Girard Apartments (Female & Male)	0	0	0
W. McGinty (Female & Male)	0	0	0
Peyton Finley Dorms (Female & Male)	60	58	97%
New Facility I (Female & Male)	256	249	97%
New Facility II (Female & Male)	239	229	92%
Bessie Estell Hall (Female)	204	198	97%
Martin Luther King (Male)	211	211	100%
C. J. Dunn Towers (Female)	463	441	95%
Grand Total	2050	1980	97%

Office of Institutional Research

*McGehee Hall, Room 205
915 S Jackson St,
Montgomery, AL 36104
Tel: 334-229-6859
Email: oir@alasu.edu
www.alasu.edu/oir*

