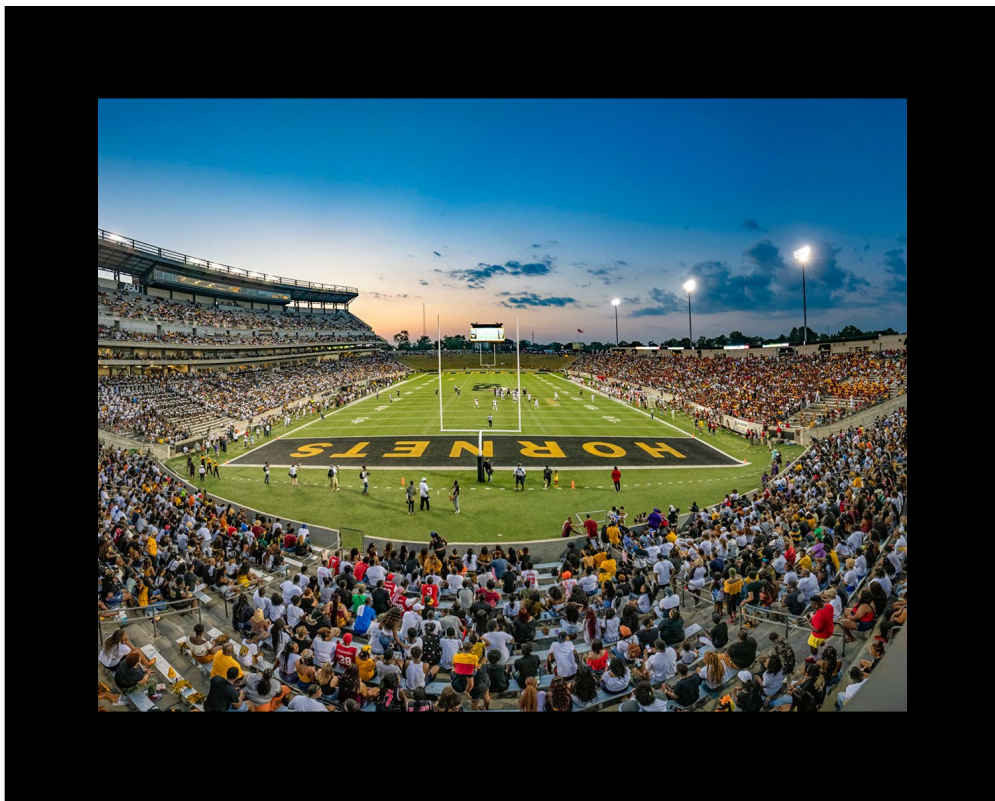




ALABAMA STATE  
UNIVERSITY

# Institutional Information

## Fall 2023



# Preface

The Office of Institutional Research (OIR) publishes the University Factbook annually. In 2019, the Factbook shifted from a static document to an online interactive Factbook. This Institutional Information document contains information supplemental to the interactive Factbook, containing pertinent information about the University's history, administration, academic programs, alumni, facilities, and housing. The interactive Factbook and Institutional Information provide a historical perspective in which to review the University's development and for use as a reference among the University's administrators and faculty in planning and decision-making.

The information presented in this Institutional Information supplement reflects the official University figures for Fall 2023. Additional information may be obtained by visiting the Office of Institutional Research website at [www.alasu.edu/OIR](http://www.alasu.edu/OIR), emailing [OIR@alasu.edu](mailto:OIR@alasu.edu), or calling (334) 229-6859.



## Office of Institutional Research

### Alabama State University

915 S. Jackson Street  
McGehee Hall-Room 205  
Montgomery, Alabama 36104  
Phone: (334) 229-6859  
Fax: (334) 229-6856  
[www.alasu.edu](http://www.alasu.edu)

# Table of Contents

GENERAL INFORMATION .....	4
<i>Mission, Vision, and Values</i> .....	6
<i>Accreditation</i> .....	7
<i>Board of Trustees</i> .....	8
<i>University Presidents</i> .....	9
<i>President’s Cabinet</i> .....	10
<i>College Deans, Academic Affairs</i> .....	11
<i>Organizational Chart</i> .....	12
ALUMNI INFORMATION .....	13
ACADEMIC DEGREE PROGRAM INVENTORY .....	14
FACILITIES .....	18
UNIVERSITY HOUSING .....	22

# GENERAL INFORMATION

## *About Alabama State*

---

### **Legacy**

The Alabama State University (ASU) was founded in 1867, in Marion, Ala., as a school for African- Americans. The school started as the Lincoln Normal School by nine freed slaves now known as the Marion Nine. The Marion Nine are Joey P. Pinch, Thomas Speed, Nicholas Dale, James Childs, Thomas Lee, John Freeman, Nathan Levert, David Harris, and Alexander H. Curtis. The co-founders and original trustees, with assistance from Marion community members, raised \$500 for land, and on July 18, 1867, filed incorporation papers to establish the Lincoln Normal School at Marion and opened its doors that November to 113 students.

Our 150-year + history is a legacy of perseverance, progress and promise. We're proud of our legacy, and we welcome students to dream, to share their unique gifts and talents, and to take pride in knowing they are part of a rich tradition. In 1873, this predecessor of Alabama State University became the nation's first state-sponsored Liberal Arts institution for the higher education of blacks beginning ASU's rich history as a "Teacher's College".

### **Today**

Alabama State University (ASU), is a widely respected, world-class institution of higher learning which welcomes students from all backgrounds. We offer over 60 undergraduate and graduate degree programs, from our historic teacher education program to our new, high-demand programs in health sciences and microbiology.

The students who attend ASU are as diverse as our academic offerings, with students from more than 40 states and various countries seeking a top-notch education that extends far beyond the walls of a classroom. With a 15 to 1 student-faculty ratio, students receive the personal attention, mentoring, encouragement, and knowledge needed to achieve their dreams.

## Location

Alabama State University (ASU) is located in historic Montgomery, Ala., the birthplace of the modern civil rights movement. ASU offers students the unique opportunity to live, learn and grow in a city rich with culture and history. In fact, some of the most notable figures of the civil rights era – including the Rev. Ralph David Abernathy, attorney Fred Gray and the Rev. Fred Shuttlesworth are counted among ASU’s many distinguished alumni.

The beautiful 172-acre campus features lush landscaping, historic landmarks, and both modern and traditional facilities that pay homage to the University’s proud past and bright future.

The ASU campus is located only a short walk from the state capital, the state government complex and downtown Montgomery, making the downtown business and entertainment district, art galleries, state archives, museums and historical sites readily accessible to students.



### **Mission**

Alabama State University (ASU) is a student-centered public HBCU committed to excellence in teaching, research, and service. ASU provides a nurturing holistic learning environment focused on developing students on campus and virtually, to be global change agents. ASU embraces CommUniversity and philanthropy to create dynamic relationships for positive community impact.

### **Vision**

Alabama State University (ASU) will achieve global recognition through excellence in teaching, research and service. ASU will advance its current Carnegie Classification to a Doctoral/Professional University. ASU aspires to be a national leader in developing students through a transformational educational experience with global impact. As a community builder and partner, ASU will continue to have a measurable impact on society through innovative education and scholarly research.

### **Institutional Values**

#### **Pride**

We are committed to sustaining ASU's rich history as an epicenter of modern-day civil rights and social justice initiatives.

#### **Integrity**

We are committed to honest and ethical standards, as we hold ourselves to transparent systems, structures, and mechanisms.

#### **Impact**

We are committed to building partnerships and collaborations to contribute to external community impact and the development of our students.

#### **Diversity**

We are committed to fostering a culture of diversity and inclusion within our community.

#### **Loyalty**

We are committed to building upon our proud traditions that will impact the lives of alumni and generations to come, with a promise to give back.

## Accreditation

---

### Institutional Accreditation

Alabama State University (ASU) is accredited to award bachelor's, master's, education specialist and doctoral degrees by the Southern Association of Colleges and Schools Commission on Colleges (SACSCOC). Contact the Commission on Colleges at 1866 Southern Lane, Decatur, Georgia 30033- 4097 or call 404-679-4500 for questions about the accreditation of Alabama State University.

### Program Accreditations

The University Departmental Programs are accredited by the following organizations and associations:

Accreditation	Acronym
The Association of Collegiate Schools and Programs	ACBSP
Accreditation Council for Occupational Therapy Education	ACOTE
Commission on Accreditation for Health Informatics and Information Management Education	CAHIIM
Commission on Accreditation in Physical Therapy Education	CAPTE
Council for Accreditation of Counseling and Related Educational Programs	CACREP
Council on Rehabilitation Education, Inc.	CORE
Council on Social Work Education	CSWE
National Association of Schools of Art and Design	NASAD
National Association of Schools of Music	NASM
National Association of Schools of Theatre	NAST
National Association of State Directors of Teacher Education and Certification	NASDTEC
Council for Accreditation of Teacher Education	CAEP

Alabama State University (ASU) is approved by the Alabama State Department of Education and its programs and credits are accepted for teacher certification.

In addition, ASU is approved by the Veterans Administration to provide educational programs authorized by Congress under several federal acts and those authorized by the state of Alabama under the Alabama G.I. and Dependents Benefit Act.

## Board of Trustees

---

Alabama State University is under the management, control, and maintenance of a Board of Trustees. The Board of Trustees consists of the Governor of Alabama, four members from the state-at-large, and one member from each of the seven congressional districts in the state, with two named from the congressional district in which the University is located. The trustees are appointed to staggered terms by the governor, with the advice and consent of the state senate.

By statute, the Board of Trustees meets in February, May, and September. It may also meet at other times on call of the board president. When not in session, its business is transacted by the executive committee of the Board of Trustees. The officers of the Board of Trustees are the President, President Pro Tempore, and the secretary, who is the President of the University.

The Alabama State University Board of Trustees has legal authority, control, and responsibility for governance of the university in the areas of institutional mission, fiscal stability, institutional policy, and related foundations and corporate entities that support the institution and its programs.

### Fall 2023 Board of Trustees

Name	Term Expiration	Profession	District
Governor Kay Ivey	Term in Office	Politics	Ex-Officio
Dr. Quinton T. Ross, Jr.	Term in Office	Education	Ex-Officio
Delbert Madison (President Pro Tempore)	2026	Banking	State-At-Large
Angela McKenzie	2026	Banking	State-At-Large Third
Robert Barnett	2023	Medicine	Nation-At-Large
Napoleon Bracy, Jr	2023	Politics	First
George Gore	2023	Consulting	Fifth
LaRaunce Fleming	2026	Consulting	Second
Eddie Hardaway	2023	Law	Seventh
Darrell L. Hudson	2026	Education	State-At-Large
Brenda B. Hunter-Dillard (President)	2026	Consulting	Nation-At-Large
Tiffany B. McCord	2026	Law	Second
Larry Means	2023	Politics	Fourth
Mario Lumzy	2023	Education	Sixth
Pamela J. Ware	2023	Government Affairs	State-At-Large
Joe Whitt Sr.	2026	Retired	Third



## University Presidents

---

The tables below list all Alabama State University presidents since the University's founding.

Years	Name
2017–Present	Dr. Quinton T. Ross, Jr. **
2016–2017	Dr. Leon C. Wilson – Interim (December-September)
2014–2016	Dr. Gwendolyn E. Boyd **
2013–2014	Dr. William Hamilton Harris - Interim (January-January)
2012-2012	Dr. Joseph H. Silver, Sr.
2008–2012	Dr. William Hamilton Harris
2001–2008	Dr. Joe A. Lee
2000–2001	Dr. Roosevelt Steptoe - Interim (October-September)
1994–2000	Dr. William Hamilton Harris
1991–1994	Dr. Clifford C. Baker **
1984-1991	Dr. Leon Howard
1983–1984	Dr. Leon Howard - Interim (November-August)
1981–1983	Dr. Robert L. Randolph
1962–1981	Dr. Levi Watkins Sr.
1962-1962	Robert C. Hatch – Interim (January-September)
1925–1962	Harper Councill Trenholm
1920–1925	George Washington Trenholm
1915–1920	William Beverly
1878-1915	William Burns Paterson
1874-1878	George N. Card

\*\* Indicates ASU Alumnus

## *President's Cabinet*

---

The Alabama State University Administrative Council, which is also called the President's Cabinet, advises the university president and provides leadership with regard to university policies, practices, and initiatives.

### **Fall 2023 President's Cabinet**

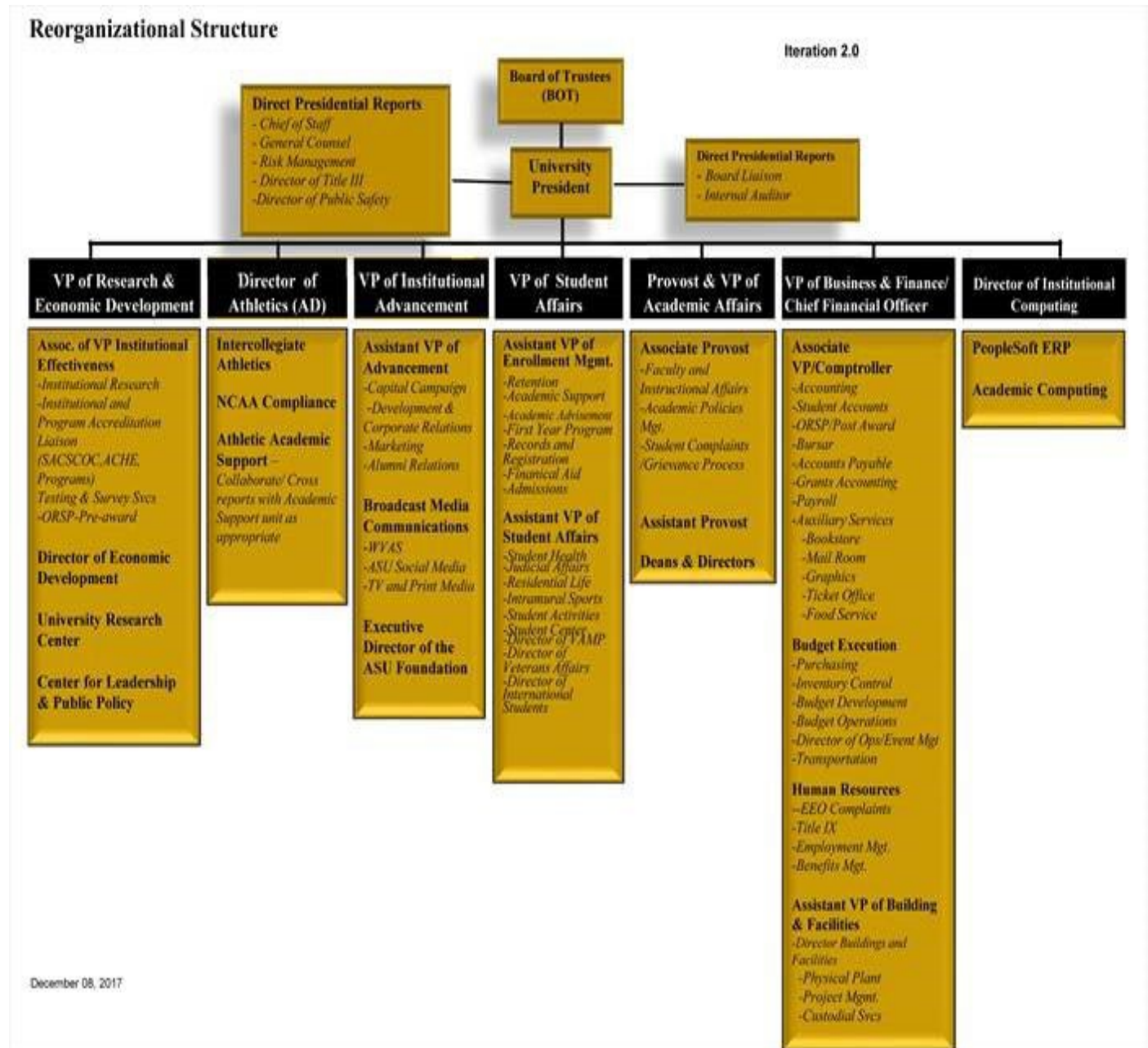
<b>Name</b>	<b>Title</b>
Dr. Quinton T. Ross, Jr.	President
Dr. Kevin Rolle	Chief of Staff
Dr. Carl Pettis	Provost and Vice President of Academic Affairs
Dr. Kennedy Wekesa	Associate Provost of Academic Affairs
Dr. Tanjula Petty	Vice President, Institutional Effectiveness, Strategic Initiatives, & Transformation
Mrs. Bryn Bakoyema	Assistant Vice President, Planning & Strategic Analysis
Dr. Damian Clarke	Vice President, Office of Technology Services
Dr. Malinda Swoope	Vice President, Student Affairs and Enrollment Management
Mrs. Alondrea Pritchett	Associate Vice President, Business and Finance/Comptroller
Colonel Gregory Clark	Vice President, Institutional Advancement
Mr. Donald Dotson	Vice President, Facilities Management & Operations
Mr. Kenneth Thomas, Esq.	University Counsel
Dr. Jason Cable	Athletic Director
Mr. Kelvin Kendrick	Deputy Director of Public Safety

**Fall 2023 Deans of Academic Colleges**

<b>Name</b>	<b>Title, College</b>
Dr. Kathaleen Amende	Dean, College of Liberal Arts and Social Science
Dr. Kamal Hingorani	Dean, College of Business Administration
Dr. Nicole Strange-Martin	Dean, College of Education
Dr. Charlene Portee	Dean, College of Health Sciences
Dr. Audrey Napier	Dean, College of Science, Technology Engineering & Mathematics
Dr. Wendy Coleman	Interim Dean, College of Visual & Performing Arts
Dr. Evelyn A. Hodge	Dean, University College
Dr. Caterina Bristol	Dean, The Harold Lloyd Murphy Graduate School
Dr. Janice Franklin	Dean, Levi Watkins Learning Center

# Organizational Chart

## Alabama State University Organizational Chart



## ALUMNI INFORMATION



### 2023-2024 Executive Officers

<b>President</b>	<b>Shannon Cloman</b>
<b>Vice President</b>	<b>Orlando Arnold</b>
<b>Secretary</b>	<b>Tislam Ellis</b>
<b>Secretary/Treasurer</b>	<b>Marcedia Bolden</b>

<b><u>Alumni Relations Director</u></b>
<b>Cromwell Handy</b>
PO Box 6124
Montgomery, AL 36106
(334) 229-4280 (513) 763-0997
chandy@alasu.edu

The mission of the Office of Alumni Relations at Alabama State University is to foster and strengthen the relationship between Alabama State University (ASU) and the National Alumni Association (NAA) of ASU, alumni, supporters and friends; to promote and preserve the University's vision, traditions, purposes, alumni growth; and to maintain records of all alumni and former students while keeping alumni and former students apprised of the latest ASU news, events and programs.

The Office of Alumni Relations maintains communications with more than **28,000 alumni**, including those who are members of the NAA. Currently, the NAA has **35 chapters** nationwide.

## ACADEMIC DEGREE PROGRAM INVENTORY

CIP	Field Of Study	Program Title	Degrees Offered
<b>College of Liberal Arts &amp; Social Sciences</b>			
09.0101	Speech Communication and Rhetoric	Communications	B.A.
23.0101	English Language And Literature, General	English	B.A.
43.0104	Criminal Justice	Criminal Justice Studies	B.S.
44.0701	Social Work	Social Work	B.S.W.
44.0701	Social Work	Social Work	M.S.W.
42.0101	Psychology, General	Psychology	B.S.
45.1001	Political Science	Political Science And Government	B.A.
54.0101	History, General	History	B.A.
54.0101	History, General	History	M.A.
<b>College of Business Administration</b>			
11.0401	Information Science/Studies	Computer Information Systems	B.S.
52.0201	Business Administration And Management, General	Business Management	B.S.
52.0301	Accounting	Accounting	B.S.
52.0801	Finance, General	Finance	B.S.
52.1401	Marketing/Marketing Management, General	Marketing	B.S.
52.0301	Accounting	Accountancy	M.Acc.

**\*Add Master's of Business Administration and Cip Code**

CIP	Field Of Study	Program Title	Degrees Offered
<b>College of Education</b>			
13.1001	Special Education And Teaching, General	Special Education	B.S.
13.1202	Elementary Education and Teaching	Elementary Education	B.S.
13.1205	Secondary Education and Teaching	Secondary Education	B.S.
13.1210	Early Childhood Education and Teaching	Pre-Elementary Education	B.S.
13.1312	Music Teacher Education	Music Education	B.M.Ed.
13.1314	Physical Education Teaching And Coaching	Physical Education	B.S.
31.0301	Parks, Recreation and Leisure Facilities Management, General	Recreational Therapy	B.S.
13.0401	Educational Leadership and Administration, General	Institutional Leadership	M.Ed.
13.0501	Educational/Instructional Technology	Library Educational Media	M.Ed.
13.1001	Special Education And Teaching, General	Special Education	M.Ed.
13.1101	Counselor Education/ School Counseling And Guidance Services	Guidance Counseling	M.Ed.
13.1205	Secondary Education and Teaching	Secondary Education	M.Ed.
13.1210	Early Childhood Education and Teaching	Early Childhood Ed	M.Ed.
13.1206	Teacher Education, Multiple Levels	P-12 Education	M.Ed.
11.1099	Computer/Information Technology Services Administration and Management Applied Technology	Applied Technology	M.S.
44.9999	Public Administration and Social Service Professions, Other	Agency Counseling	M.S.

CIP	Field Of Study	Program Title	Degrees Offered
<b>College of Education (Cont.)</b>			
13.0401	Educational Leadership and Administration, General	Educational Leadership, Policy, and Law	Ed.D.
13.0401	Educational Leadership and Administration, General	Educational Leadership, Policy, and Law	Ph.D.
13.0101	Education, General	Education	Ed.S.
13.1101	Counselor Education/ School Counseling And Guidance Services	Counseling	Ed.S.
13.0401	Instructional Leadership	Instructional Leadership	Ed.S.
13.0401	Teacher Leadership	Teacher Leadership	Ed.S.
13.0501	Library Educational Media	Library Educational Media	Ed.S.
<b>College of Health Sciences</b>			
51.0706	Health Information/Medical Records Administration/	Health Information Management	B.S.
51.2399	Rehabilitation And Therapeutic Professions, Other	Rehabilitation Services	B.S.
51.2310	Vocational Rehabilitation Counseling/Counselor	Rehabilitation Counseling	M.R.C.
51.2307	Orthotics/Prosthetics	Prosthetics and Orthotics	M.S.
51.2306	Occupational Therapy/Therapist	Occupational Therapy	M.S.O.T
51.2308	Physical Therapy/Therapist	Physical Therapy	D.P.T.
<b>College of Science, Technology, Engineering &amp; Mathematics</b>			
11.0701	Computer Science	Computer Science	B.S.
26.0101	Biology/Biological Sciences, General	Biology	B.S.
26.0101	Biology/Biological Sciences, General	Biology	M.S.
43.0111	Criminalistics and Criminal Science	Forensic Biology	B.S.
26.0502	Microbiology, General	Microbiology	Ph.D.
26.1302	Marine Biology And Biological Oceanography	Marine Biology	B.S.
27.0101	Mathematics, General	Mathematics	B.S.



CIP	Field Of Study	Program Title	Degrees Offered
<b>College of Science, Technology, Engineering &amp; Mathematics (Cont.)</b>			
27.0101	Mathematics, General	Mathematics	M.S.
40.0501	Chemistry, General	Chemistry	B.S.
40.051	Forensic Chemistry	Forensic Chemistry	B.S.
40.0801	Physics, General	Physics	B.S.
43.0106	Forensic Science And Technology	Forensic Science	M.S.
14.0501	Bioengineering and Biomedical Engineering	Biomedical engineering	B.S.
<b>College of Visual &amp; Performing Arts</b>			
50.0301	Dance, General	Dance	B.F.A.
50.0501	Drama And Dramatics/Theatre Arts, General	Theatre Arts	B.A.
50.0701	Art/Art Studies, General	Art	B.A.
50.0901	Music, General	Music	B.A.
<b>University College</b>			
30.9999	Multi-/Interdisciplinary Studies, Other	Interdisciplinary Studies	B.S./B.A.

### Total Number of Degree Programs

Baccalaureate	35
Masters	19
Education Specialist	6
Doctoral	4
<b>Total</b>	<b>64</b>

# FACILITIES

## Building Inventory, Fall 2023

Building Number	Building Name	Construction Year	Net Assignable Square Footage	Gross Square Footage
1	John W. Abercrombie Hall	1947	32,934	38,580
3	Fred Shuttlesworth Dining Hall	2007	27,300	39,000
4	John W. Beverly Hall	1939	16,511	24,483
5	JoAnn Robinson Hall	1928	32,934	38,580
6	William Hooper Councill Hall	1956	41,371	62,872
14	George H. Lockhart Gymnasium	1939	31,913	48,956
19	Kilby Hall	1920	4,065	8,256
22	William Burns Paterson Hall	1930	26,494	46,886
23	Friendship Manor	1922	4,632	5,150
26	George W. Trenholm Hall	1947	19,671	33,818
55	H. Councill Trenholm Hall	1968	42,388	57,352
56	Edward G. McGehee Hall	1968	27,778	41,715
57	Willease R. Simpson Hall	1966	27,952	42,476
58	Cynthia D. Alexander Apartments	1966	7,572	7,816
59	Cynthia D. Alexander Apartments	1966	4,773	4,956
60	George N. Card Hall	1963	32,704	35,577

<b>Building Number</b>	<b>Building Name</b>	<b>Construction Year</b>	<b>Net Assignable Square Footage</b>	<b>Gross Square Footage</b>
62	University House	1970	4,799	5,184
63	Zelia Stephens Early Childhood Center	1971	9,832	14,145
64	Bessie W. Benson Hall	1972	32,964	41,205
66	Tullibody Hall	1974	23,219	41,000
68	Levi Watkins Learning Center	1978	74,690	107,166
69	Business Administration	1978	19,986	28,534
70	Peyton Finley	1983	2,157	3,872
74	Willetta McGinty Apartments	1983	3,120	3,872
78	Tullibody Fine Arts Center	1984	25,782	52,176
79	Martin L. King, Jr. Hall	1990	36,481	64,513
80	Bessie S. Estell Hall	1990	36,481	64,513
81	ASU Acadome	1992	111,438	220,512
82	Charles Johnson Dunn Tower	1994	67,994	114,419
83	Olean Black Underwood Tennis Center	1994	1,777	2,700
86	Allied Health #1	1955	15,747	17,616
87	Allied Health #2	1955	5,974	8,368
90	Physical Plant	1971	15,250	18,324
91	Bus Wash Rack	2000	2,574	2,700

<b>Building Number</b>	<b>Building Name</b>	<b>Construction Year</b>	<b>Net Assignable Square Footage</b>	<b>Gross Square Footage</b>
96	Norris House	1930	1,683	1,870
97	Nat King Cole	1912	810	900
98	Civil Rights Center	1990	2,453	3,628
100	John Buskey Health Center	2001	45,077	77,980
101	Kittell Hall	1962	7,105	10,442
102	German Hall	1935	2,165	2,496
103	Van Vorst Hall – North	1962	2,625	3,983
104	Van Vorst Hall	1924	6,737	10,107
105	Van Vorst Hall-South	1963	2,063	2,907
106	Dolley Hall	1930	5,944	9,410
107	Craft Shop	1958	452	499
108	Callie Lee Center	1976	2,867	3,000
109	Maintenance Garage	1970	1,033	1,148
110	Meeng's Hall	1975	9,508	12,800
111	Branche Hall	1960	9,051	13,121
112	Gymnasium	1968	12,847	16,903
113	South Duplex	1970	2,268	2,520
114	President's Home	1965	1,517	2,051
115	Chapel	1948	5,253	6,730
116	Day Care Center	1930	2,185	2,538

<b>Building Number</b>	<b>Building Name</b>	<b>Construction Year</b>	<b>Net Assignable Square Footage</b>	<b>Gross Square Footage</b>
117	Pole Barn	1978	3,579	3,652
118	North Duplex	1993	2,223	2,470
119	Open Shed	1960	1,329	1,350
120	East Storage Building	1965	1,243	1,440
121	Alumni Relations	1955	2,290	2,750
122	Robert C. Hatch	2007	35,125	55,951
123	Grounds Shop	1990	1,163	1,360
124	Dwight's	1990	1,178	3,800
125	Life Sciences Building	2008	60,000	85,000
126	Ralph D. Abernathy	2009	124,419	140,623
127	Inventory Control	1978	3,154	3,270
128	ASU 32 Commerce	1979	55,457	64,605
129	Football Complex	2011	28,770	36,062
131	Dorm A	2011	59,416	78,740
132	Dorm B	2011	62,874	78,740
133	Public Safety	1972	4,675	5,006
134	Medical Place	1997	11,147	11,399
135	Baseball Complex	2012	1,661	1,917
136	Softball Complex	2012	1,444	1,629
137	P&O	1988	6,286	9,656
138	ASU Stadium	2012	378,479	344,072
139	Hardy Student Center	2012	64,933	76,800
140	Nat'l Interpretive Center	2017	7,000	8,340
141	413 Julia Street	1950	2,016	2,793
142a	McCorvey Building A	1985	3,191	3,191
142b	McCorvey Building B	1985	3,191	3,191
142c	McCorvey Building A	1985	3,191	3,191
143	RV Building	2019	864	864
<b>Total</b>			<b>1,952,294</b>	<b>2,662,346</b>

# UNIVERSITY HOUSING

## Housing Occupancy, Fall 2023

University Housing and Resident Gender	Capacity	Students	Occupancy Rate
Abercrombie Hall (Male)	126	106	84%
Jo Ann Robinson (Female)	126	124	98%
Simpson Hall (Male)	98	98	100%
Bessie Benson Hall (Female)	140	133	95%
George N. Card Hall (Male)	118	112	94%
Country Club Apartments (Female & Male)	84	74	88%
W. McGinty (Female & Male)	51	49	96%
Peyton Finley Dorms (Female & Male)	60	59	98%
New Facility I (Female & Male)	256	247	96%
New Facility II (Female & Male)	242	231	95%
Bessie Estell Hall (Female)	213	198	92%
Martin Luther King (Male)	207	188	90%
C. J. Dunn Towers (Female)	470	460	97%
<b>Grand Total</b>	<b>2191</b>	<b>2079</b>	

## **Office of Institutional Research**

*McGehee Hall, Room 205  
915 S Jackson St,  
Montgomery, AL 36104  
Tel: 334-229-6859  
Email: [oir@alasu.edu](mailto:oir@alasu.edu)  
[www.alasu.edu/oir](http://www.alasu.edu/oir)*

